

# Wasp

## BARCODE TECHNOLOGIES

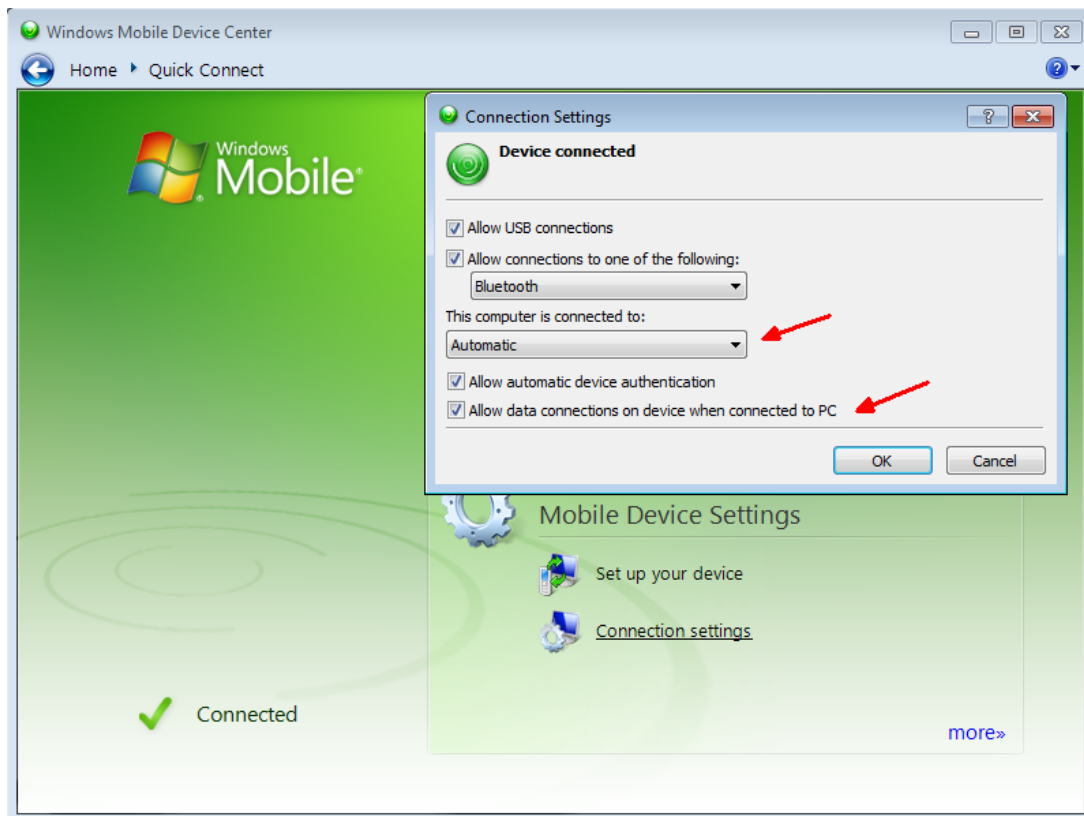
[Portal](#) > [Knowledgebase](#) > [Cloud](#) > [AssetCloud](#) > [Windows Mobile Device Center settings interfere with mobile device's connection to Wasp service](#)

---

### Windows Mobile Device Center settings interfere with mobile device's connection to Wasp service

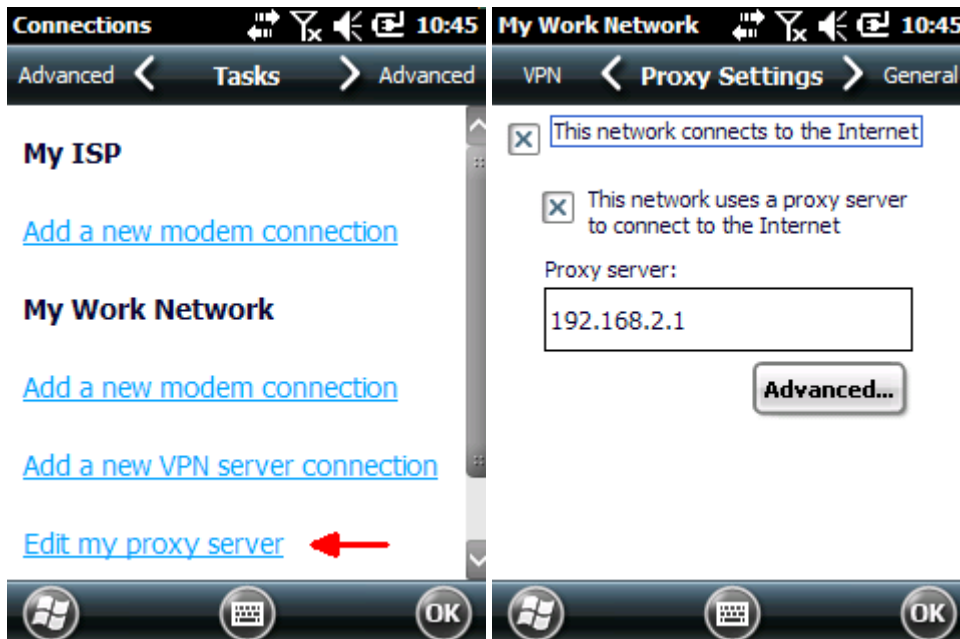
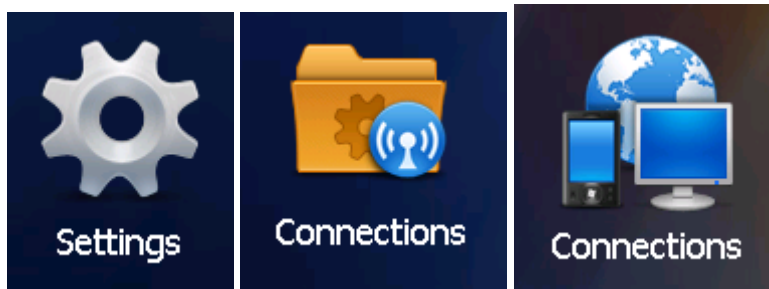
Scott Leonard - 2018-03-19 - in AssetCloud

When a Windows Mobile or CE device is connected to a PC, Windows Mobile Device Center is the component that allows the device to communicate with Windows, and then to Wasp's various components, for AssetCloud, InventoryCloud, InventoryControl, MobileAsset, PackageTracker, CountIt, etc. There are a couple of connection settings that may need to be adjusted for successful connections.

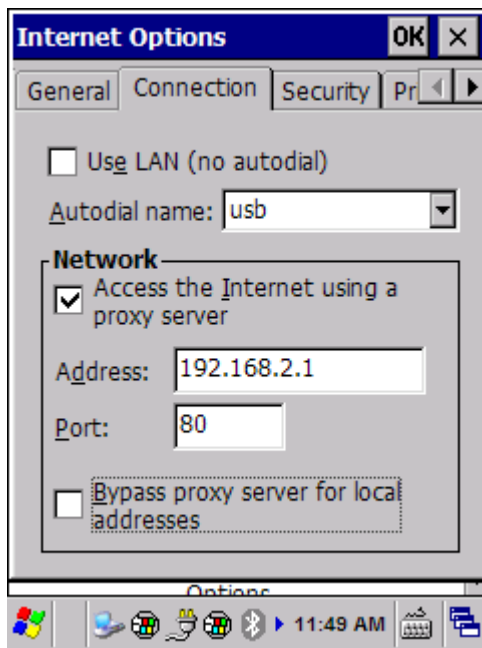


1. Checking the box for "Allow data connections on device when connected to PC" does two things:
  - a. allows the mobile device to contact a wireless network while plugged into the PC.
  - b. enables WMDC's virtual network connection over the cable. The PC shows an additional IP address of 169.254.2.2 as seen in IPCONFIG output, and the device is assigned the IP address of 169.254.2.1.
  
2. If the PC is set to use a network proxy, WMDC's default setting of Automatic for "This computer is connected to:" will push that proxy setting to the mobile device. This is how Microsoft designed it to work. However, in most cases, the mobile device should not be set to use a proxy. If that is the case:
  - a. Change WMDC's Automatic setting to Work Network to prevent the automatic push to the mobile device.
  - b. Disable the proxy setting on the device:

Windows Mobile: Start, Settings, Connections, Connections, Edit my proxy server. Just in case, mark down the value in the "Proxy server:" field. Uncheck the box for "This network uses a proxy server to connect to the Internet", OK, OK.



Windows CE: Start, Settings, Control Panel, Internet Options, Connections tab. Just in case, mark down the values in the Address and Port fields. Uncheck the box for "Access the Internet using a proxy server", OK.



---

Source: <http://blogs.technet.com/b/vik/archive/2007/03/09/how-do-i-stop-my-device-from-importing-my-desktop-proxy-settings-with-i-cradle-my-device.aspx>

#### Related Pages

---

- [Windows Mobile Device Center \(WMDC\) Troubleshooting Resources](#)
- [WDT60: Network configuration to enable name resolution and/or internet browsing](#)
- [Summit Client Utility: How to set up wireless, and choose from multiple SSIDs \(wireless networks\)](#)
- [HC1 & WPA1000-II: Network configuration to enable name resolution and/or internet browsing](#)
- [WDT60 Mobile Device Not recognized by Windows Mobile Device Center, connected with data cable \(Bluetooth setup\)](#)