



WASP PROTECT

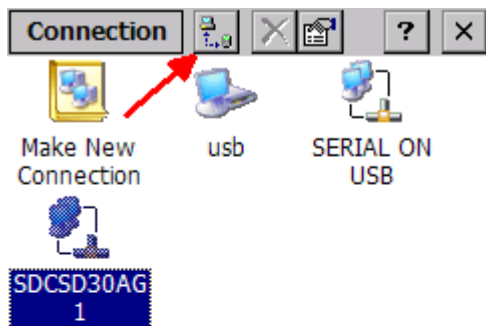
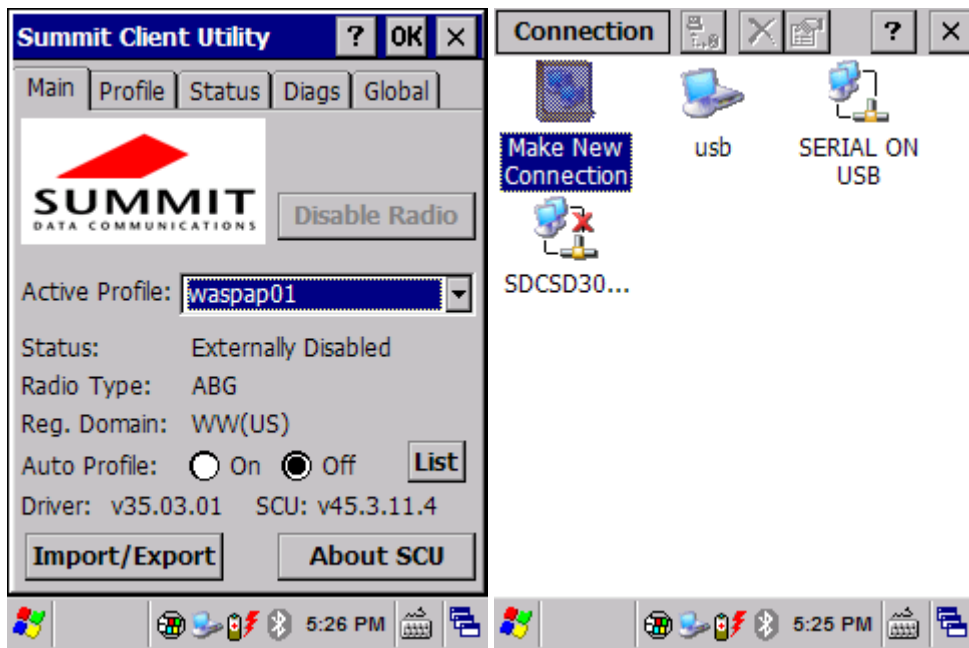
Portal > Knowledgebase > Hardware > Mobile Computers > WDT90: How to disable and enable wifi card (Summit status is Externally Disabled)

WDT90: How to disable and enable wifi card (Summit status is Externally Disabled)

Scott Barnett - 2017-04-10 - in Mobile Computers

This procedure describes how to disable and enable the wifi/wireless card in the WDT90 mobile device. When the card is disabled, the Summit Client Utility (SCU) reports the Status as Externally Disabled.

1. Start, Settings, Network and Dial-up Connections (same as in Control Panel).
2. Tap to select "SDCSD30..." (becomes SDCSD30AG1).
3. Tap the button to the right of "Connection". This toggles the wifi card disabled/off and enabled/on. A red X on the icon indicates it is disabled/off.



Related Pages

- [Mobile Device User Manuals, Programming Reference Guides, Quick Reference Guides, Quick Start Guides \(multiple models\)](#)
- [WDT60: Disabling and Enabling the Wifi card](#)
- [Summit Client Utility: How to set up wireless, and choose from multiple SSIDs \(wireless networks\)](#)
- [delete](#)