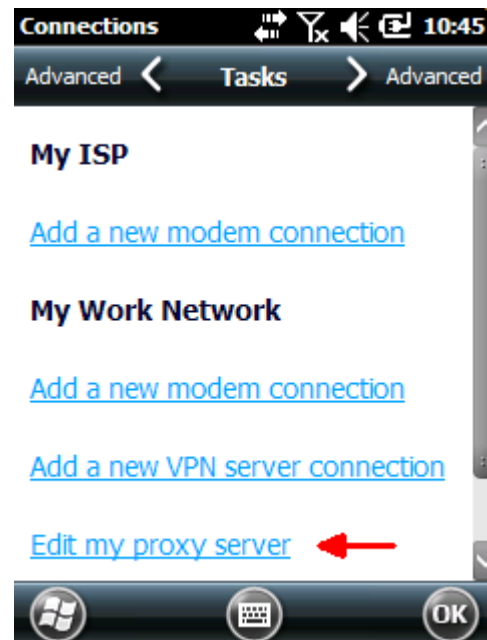
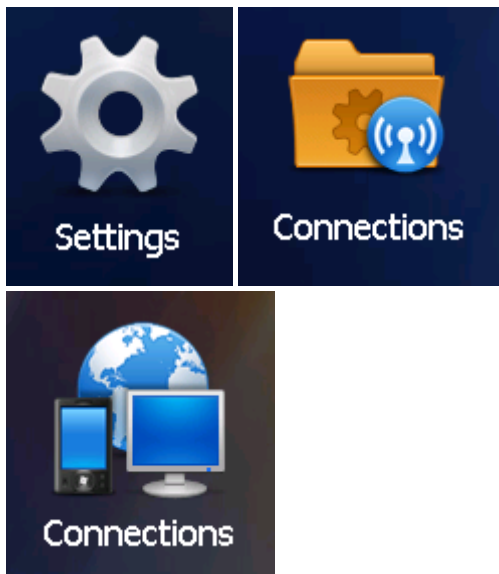


## WDT60: Network configuration to enable name resolution and/or internet browsing

Scott Leonard - 2025-01-06 - [Mobile Computers](#)

On the WDT60 mobile device, the following network settings usually enable internet browsing and name resolution, for many wireless network setups.

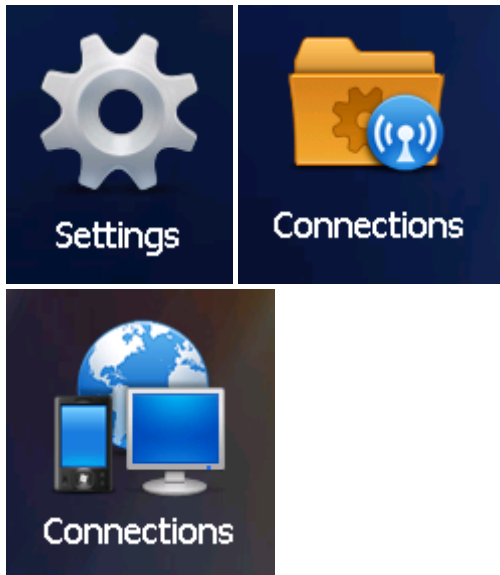
Start, Settings, Connections, Connections:



In the list of text links, if you see "Set up my proxy server", no change is necessary.

If you see "Edit my proxy server", review the article "Windows Mobile Device Center settings interfere with mobile device's connection to Wasp service" (linked below) to decide whether you need to make changes here (most of the time, the mobile device doesn't need a proxy).

Start, Settings, Connections, Connections, Advanced:

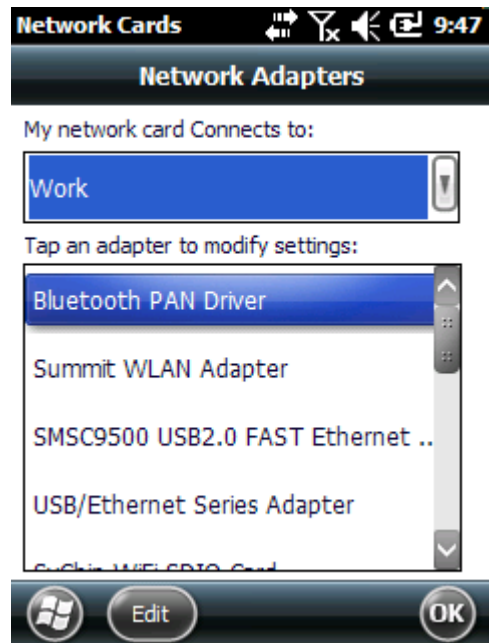
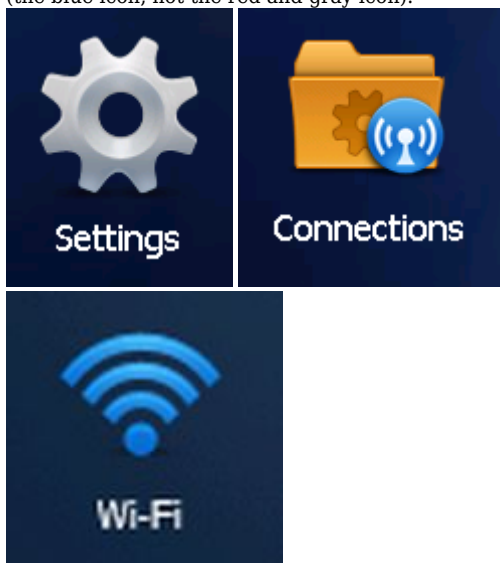


Tap the "Select Networks" button:

- Programs that automatically connect to the Internet should connect using: **My Work Network** (default: My ISP).
- Programs that automatically connect to a private network should connect using: **My Work Network**
- Tap OK.



Start, Settings, Connections, Wi-Fi (the blue icon, not the red and gray icon):



- "My network card Connects to": **Work**

- Tap OK.

In other situations, more trial and error is required to determine the settings that work best with your network. Each of the 3 settings above have 2 settings each, yielding a total of 8 possible combinations. Document the current settings, test, document the results, change to a combination of settings that you haven't used before, repeat.

When you find the combination of settings that works best for you, note that in your documentation. Since the settings get set back to defaults if the WDT60 loses all power or is reset, retain this testing documentation for future reference.

In most cases, Windows Mobile Device Center needs to have Mobile Device Settings, Connection Settings, "This computer is connected to" set to "Work Network". For detailed instructions on this, see the "settings interfere" article linked below in Related Pages.

## Related Content

- [Mobile Device User Manuals, Programming Reference Guides, Quick Reference Guides, Quick Start Guides \(multiple models\)](#)
- [Windows Mobile Device Center: Device Connection Settings in the Registry](#)
- [WDT60: Disabling and Enabling the Wifi card](#)
- [Windows Mobile Device Center settings interfere with mobile device's connection to Wasp service](#)
- [Summit Client Utility: How to set up wireless, and choose from multiple SSIDs \(wireless networks\)](#)
- [WDT60 Mobile Device Not recognized by Windows Mobile Device Center, connected with data cable \(Bluetooth setup\)](#)