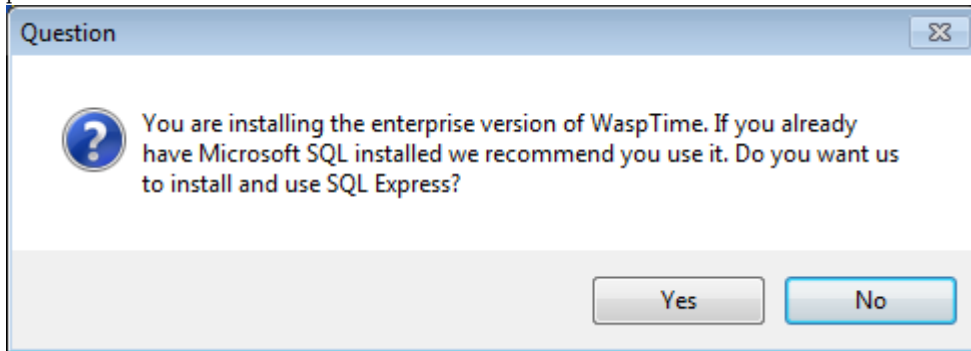


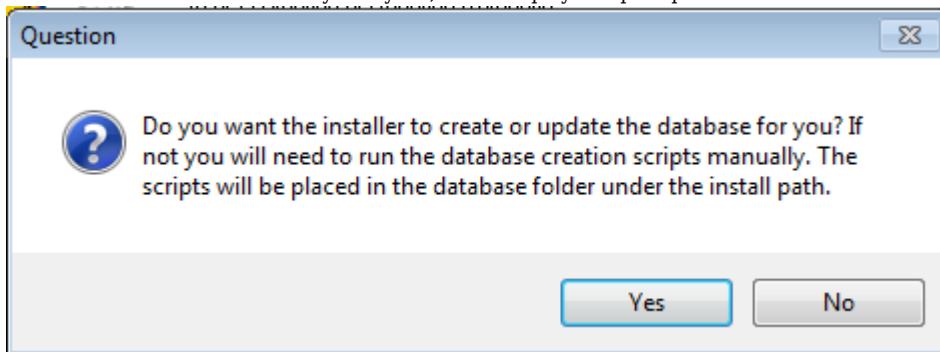
WaspTime 7 Enterprise: How do I direct the database creation to my full version SQL instance?

Jason - 2018-03-21 - [Version 7](#)

During installation of WaspTime, after entering the serial number, it will prompt you for which components to install. If you check the box for the Database, it will show you the following prompt when it begins the database portion of the installation:



If you click Yes, the installer will create a SQL 2005 Express instance named WASPDBEXPRESS, and will create the database in that instance. If you say No, it will display this prompt:



If you click No, then you will need to manually run NewWaspTime6.sql and WaspTime7.sql on your SQL Server to create the database. If you click Yes, it will give the following prompt:

Wasp Installer

Database Server Login

Select database server and authentication method

Select the database server to install to from the list below or click Browse to see a list of all database servers. You can also specify the way to authenticate your login using your current credentials or a SQL Login ID and Password.

Database Server:

WIN-0B8NPSB1P94

Browse...

Connect using:

Windows authentication

SQL Server authentication using Login ID and password below

Login ID:

sa

Password:

.....

InstallShield

< Back

Next >

Cancel

Database Server will automatically populate with the local machine name. This can be changed to a different machine name if SQL is not running locally. To install to the default unnamed SQL instance, enter just the server name. To install to a different named instance, enter the machine name\instance name. E.g., WIN-0B8NPSB1P94\MYOWNINSTANCE. The installation will then proceed to run the database creation scripts in the specified SQL Server instance.