



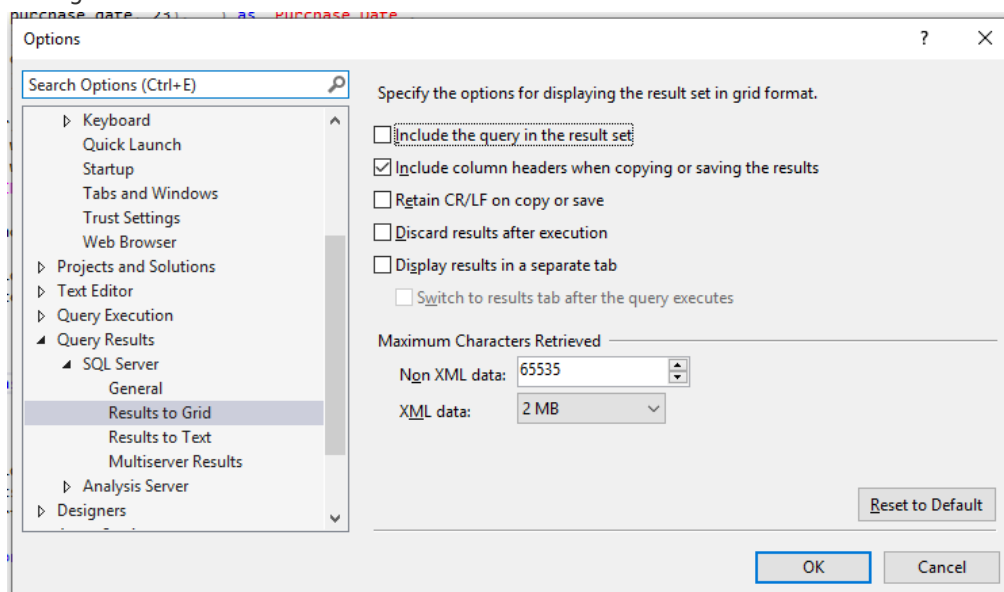
WASP PROTECT

Portal > Knowledgebase > FAQs > Using AssetCloud Export scripts

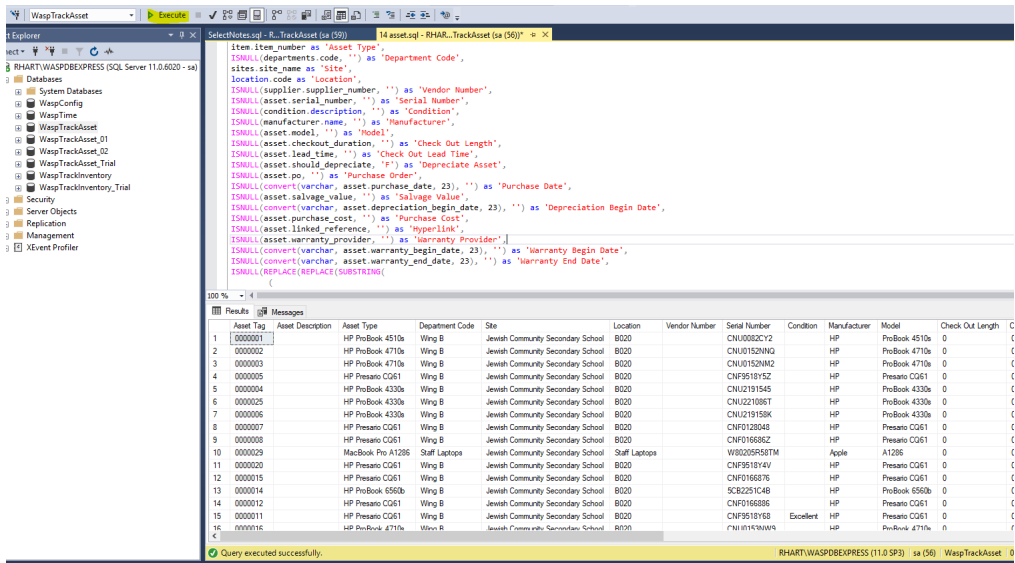
Using AssetCloud Export scripts

Russ Hart - 2022-05-06 - in FAQs

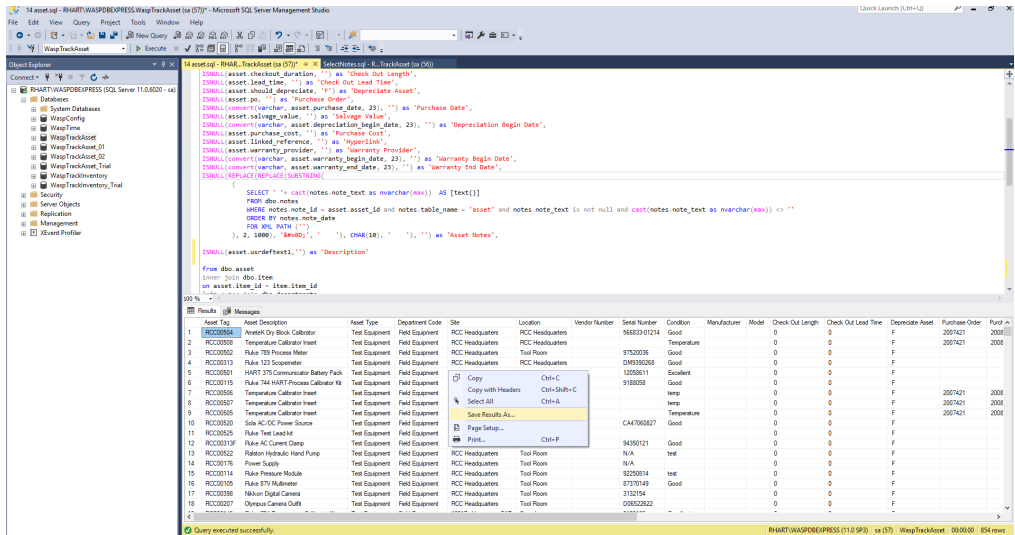
1. In order for the export scripts to work properly you need to use SQL Server Management Studio 2016 or newer
2. SQL Server Management Studio 2018 can be downloaded here <https://docs.microsoft.com/en-us/sql/ssms/download-sql-server-management-studio-sms?view=sql-server-ver15>
3. [Download the scripts](#) and extract them to a folder.
4. Login to SQL Server Management Studio using **sa** and **Wasp\$07Wasp\$07** for user name and password (Enterprise users with your own SQL Server may be different)
5. In SQL Server Management System go to Tools > Options > Query Results > SQL Server > Results to Grid and ensure that "Include column headers when copying or saving the results" is checked.



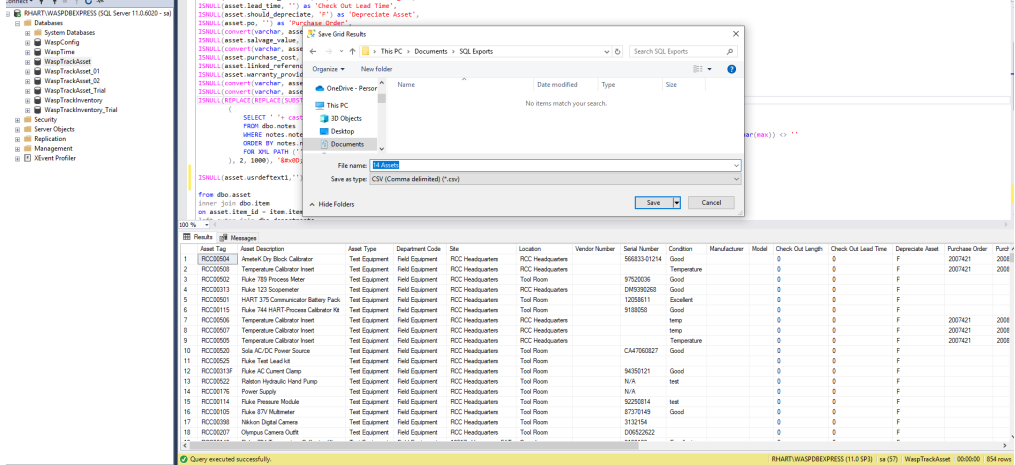
6. Open and execute each of the scripts, it should populate with the results Make sure that you have WaspTrackAsset Selected prior to clicking Execute



7. Right click in the Results and choose Save as and give the form a name. It's easier when importing to name and number the forms to match the script.



8. Once you have ran all the scripts and saved the results for each, In AssetCloud



navigate to Form Customization.

Use the CSV file generated by 00_CustomFields.sql to create your custom fields.

Choose the appropriate form, tab, and section dropdown as indicated by that custom fields file, then select "New"

Form Customization
You can add and edit the fields that can appear on each page. You can also add custom fields. If you delete a custom field, it will also delete the related data in the application.

Choose Form
To add a custom field, select the Module, then select Tab and Section, then select New. These modules support custom fields: Asset, Asset Type, Customer, Employee, Funding, Location, Manufacturer, Site and Vendor.

Form: **Asset** | Tab: **Custom Fields** | Section: **Custom Fields**

Field Name	Data Type	Visible	Required	Send To Mobile	Maintenance Visible	Maintenance Require...

9. Click New,

Choose Form
To add a custom field, select the Module, then select Tab and Section, then select New. These modules support custom fields: Asset, Asset Type, Customer, Employee, Funding, Location, Manufacturer, Site and Vendor.

Form: **Asset** | Tab: **Custom Fields** | Section: **Custom Fields**

New **Delete**

10.

Choose the Data Type based on the contents of that custom fields CSV

New Custom Field

Asset / Custom Fields / Custom Fields

Provide Field Details

Data Type: **Text**

*Field Name

Place field on

Choose Asset Type:

Asset Type

Asset Type Descr

11. Choose the appropriate visibility and save.

New Custom Field

Asset / Custom Fields / Custom Fields

Provide Field Details

Data Type: Text

*Field Name: Description

Required Visible Send To Mobile Maintenance Required Maintenance Visible

Place field on: All Asset Types Selected Asset Types

Asset Type	Asset Type Description	Category Name
<input type="checkbox"/> Test Equipment	Test equipment for field testing	Test Category
<input type="checkbox"/> IT	Information Technology equipment; computers, ser...	
<input type="checkbox"/> Office	Office Equipment	
<input type="checkbox"/> Safety	Safety Equipment	
<input type="checkbox"/> Furniture	General Office furniture; tables, chairs, desks etc.	
<input type="checkbox"/> Field Furniture	Furniture used in the field.	
<input type="checkbox"/> Marketing	Marketing equipment; Show displays, Demo units etc.	
<input type="checkbox"/> Instrument	Instruments and PLC parts that could be sold to clie...	
<input type="checkbox"/> Communication	Communication Equipment; Cell Phones, Radios etc.	

Save Cancel

12. After creating all of your custom fields you should be able to import your data using the files you saved from the database, in the order listed.

*****Note:** Be advised that users with the basic edition of the software may not have the ability to import sites, this will cause all subsequent form numbers to be off by one.

If you have images or attachments in your database use the knowledge base article below to import them into your cloud database

<http://support.waspcbarcode.com/kb/articles/assetcloud-inventorycloud-how-can-we-import-the-attachments-from-mobileasset-inventorycontrol>