

Wasp

BARCODE TECHNOLOGIES

[Portal](#) > [Knowledgebase](#) > [Hardware](#) > [Printers](#) > [Thermal Receipt Printers: Printer Driver \(v4.51\)](#)

Thermal Receipt Printers: Printer Driver (v4.51)

Scott Leonard - 2022-09-20 - in [Printers](#)

Print driver for multiple Wasp thermal receipt printer models. This driver is compatible with Windows 10, Windows 8, Windows 7, Vista, and XP. Compatible printer model numbers include:

WTP100

RP200 (RP-WPRP200)

RP300H

RP330

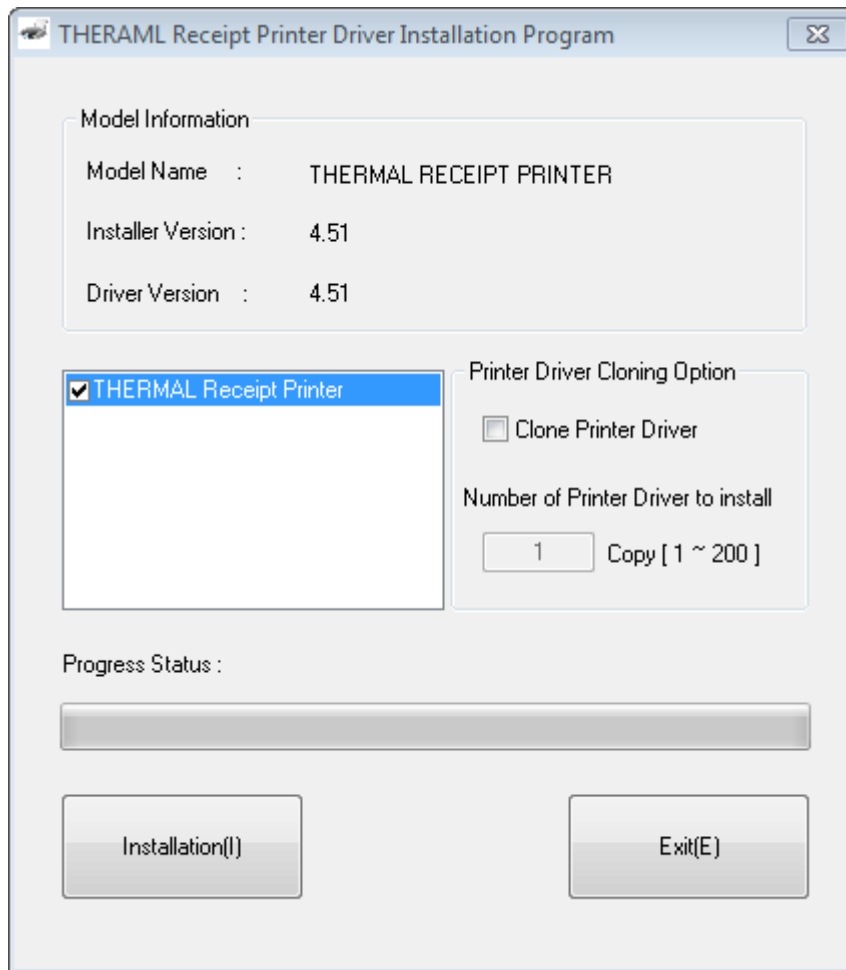
WRP8055

1. Start with the printer assembled (including receipt paper) but turned off.

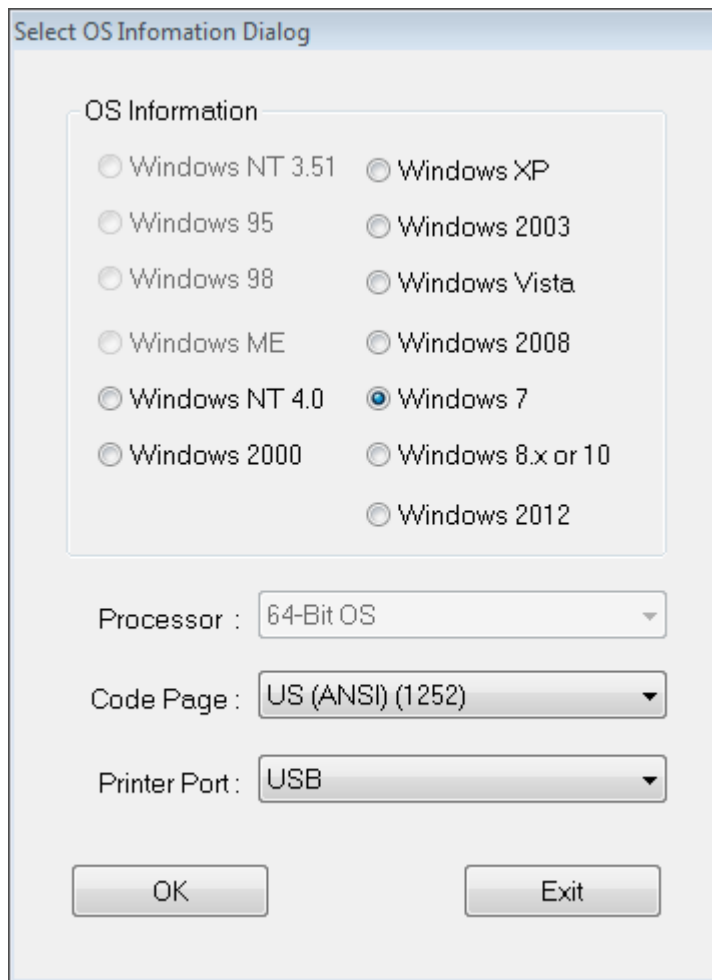
2. Download, save, and run the following file (12.6 MB):

<https://dl.waspbarcode.com/kb/pos/ReceiptPrinterDriver4.51.exe>

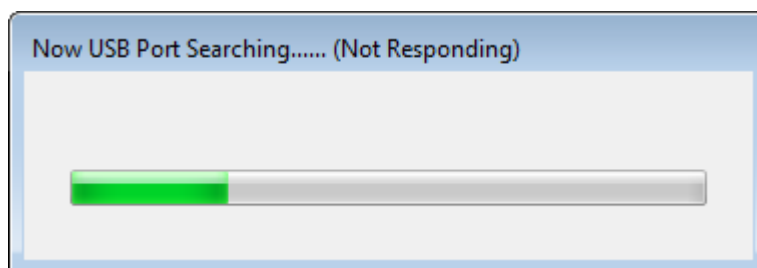
3. Check the box for THERMAL Receipt Printer, then click the Installation button.



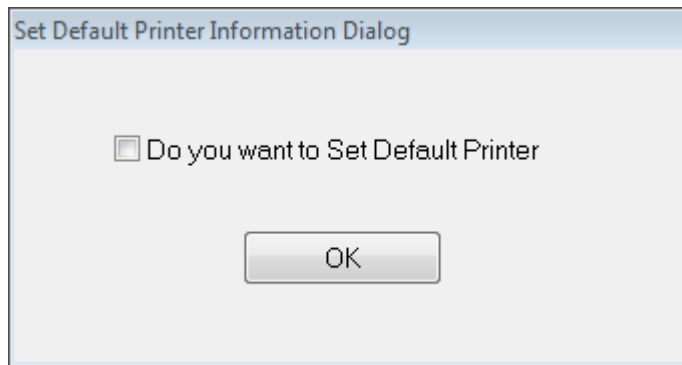
4. The "Select OS Information Dialog" screen usually detects your settings properly; if not, update those. Click OK.



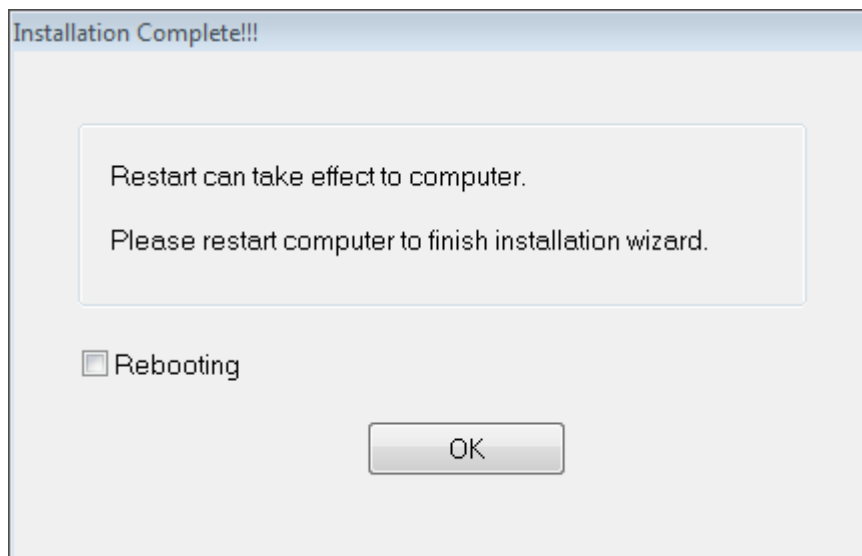
5. Follow the printer connection instructions: Start with the printer turned off. If needed, connect the printer's power cable from wall to printer. Connect the USB cable from the printer to the computer. Turn on the printer. Click OK.



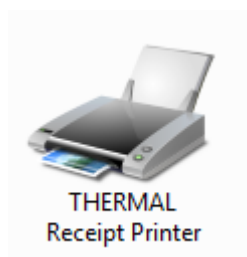
6. Uncheck "Do you want to Set Default Printer", then click OK.



7. Uncheck the Rebooting checkbox, then click OK.



8. The printer should now show in Devices and Printers as "THERMAL Receipt Printer".



Other info: The driver installer creates a local printer port called USBPOS0 (this might have a different number at the end), and creates an entry in Programs and Features called "THERMAL RECEIPT 4.51".

Below in Related Pages are articles with an older version of this driver, and print driver troubleshooting info.

Related Pages

- [WPL Print Driver Removal via Registry. Driver Wizard says it completed, but the "completed successfully" list is empty and no printer is actually installed.](#)
- [Thermal Receipt Printers: Printer Driver \(v3.51, older, deprecated\)](#)