

MobileAsset v7: Database Manager: how to reset the default backup location

Scott Leonard - 2025-01-07 - [Version 7](#)

In MobileAsset v7's Database Manager, the location of the backup file is set on the Backup tab, at the lower left. At a new installation, this location shows <Default SQL Server Location>, which results in a filename of "WaspTrackAsset_YYYYMMDD_hhmmss.BAK" (with the date & time values specified automatically).

However, if this location is changed by the user, the full filename must be specified by the user every time, and the date & time are not automatically set.

How to revert this location back to the default:

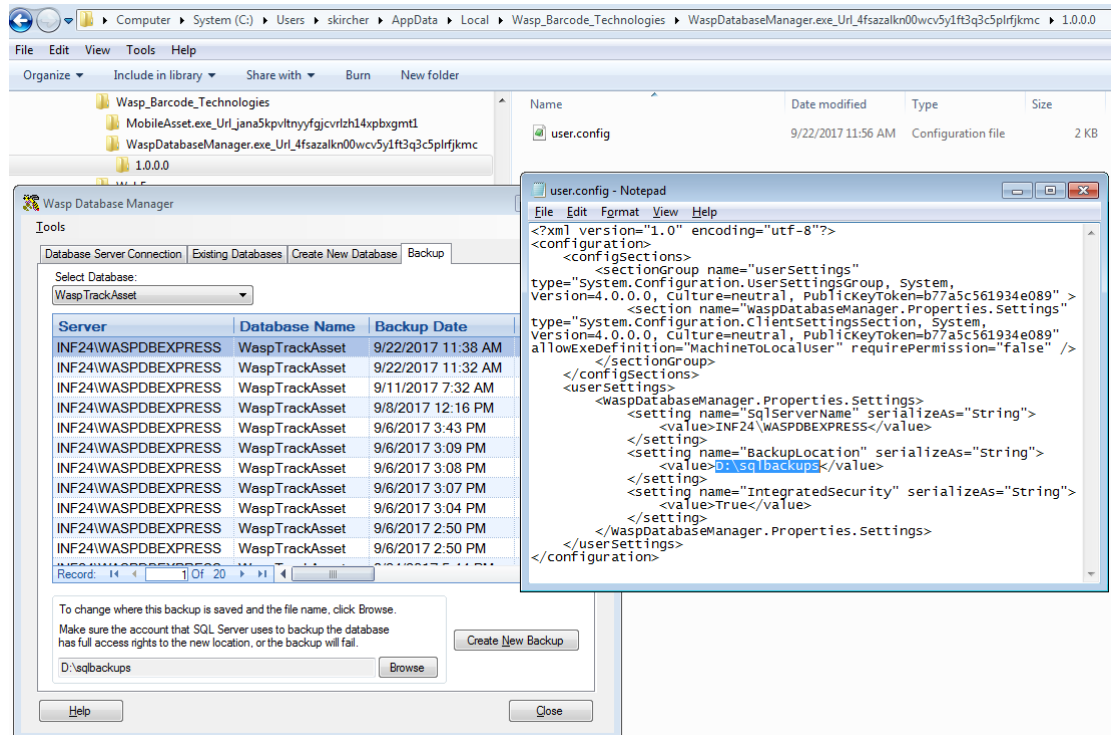
If it's open, close Database Manager.

In Windows File Explorer, browse to the following path (use the appropriate username and random characters from your installation):

C:\Users\[username]\AppData\Local\Wasp_Barcode_Technologies\WaspDatabaseManager.exe_Url_[random characters]\1.0.0.0

Edit the user.config file in Notepad or other text editor. Delete the BackupLocation path that appears between <value> and </value> (see screenshots below). Save the file.

Reopen Database Manager. The backup file location should be <Default SQL Server Location>.



Computer > System (C:) > Users > skircher > AppData > Local > Wasp_Barcode_Technologies > WaspDatabaseManager.exe_Url_4fsazalkn00wcv5y1ft3q3c5plrfjkmc > 1.0.0.0

File Edit View Tools Help

Organize Include in library Share with Burn New folder

Wasp_Barcode_Technologies

- MobileAsset.exe_Url_jana5kpvitnyyfgjcvrlzh14xpbxgmtl
- WaspDatabaseManager.exe_Url_4fsazalkn00wcv5y1ft3q3c5plrfjkmc
- 1.0.0.0
- WASP...

Name	Date modified	Type	Size
user.config	9/22/2017 12:03 PM	Configuration file	2 KB

Wasp Database Manager

Tools

Database Server Connection Existing Databases Create New Database Backup

Select Database:
WaspTrackAsset

Server	Database Name	Backup Date
INF24\WASPD EXPRESS	WaspTrackAsset	9/22/2017 11:38 AM
INF24\WASPD EXPRESS	WaspTrackAsset	9/22/2017 11:32 AM
INF24\WASPD EXPRESS	WaspTrackAsset	9/11/2017 7:32 AM
INF24\WASPD EXPRESS	WaspTrackAsset	9/8/2017 12:16 PM
INF24\WASPD EXPRESS	WaspTrackAsset	9/6/2017 3:43 PM
INF24\WASPD EXPRESS	WaspTrackAsset	9/6/2017 3:09 PM
INF24\WASPD EXPRESS	WaspTrackAsset	9/6/2017 3:08 PM
INF24\WASPD EXPRESS	WaspTrackAsset	9/6/2017 3:07 PM
INF24\WASPD EXPRESS	WaspTrackAsset	9/6/2017 3:04 PM
INF24\WASPD EXPRESS	WaspTrackAsset	9/6/2017 2:50 PM
INF24\WASPD EXPRESS	WaspTrackAsset	9/6/2017 2:50 PM
INF24\WASPD EXPRESS	WaspTrackAsset	9/24/2017 5:44 PM

Record: 14 of 20

To change where this backup is saved and the file name, click Browse.
Make sure the account that SQL Server uses to backup the database has full access rights to the new location, or the backup will fail.

<Default SQL Server Location> Browse

Create New Backup

Help Close

user.config - Notepad

```
File Edit Format View Help
<?xml version="1.0" encoding="utf-8"?>
<configuration>
  <configSections>
    <sectionGroup name="userSettings"
type="System.Configuration.UserSettingsGroup, System,
Version=4.0.0.0, Culture=neutral, PublicKeyToken=b77a5c561934e089" >
      <section name="waspDatabaseManager.Properties.Settings"
type="System.Configuration.ClientSettingsSection, System,
Version=4.0.0.0, Culture=neutral, PublicKeyToken=b77a5c561934e089"
allowExeDefinition="MachineToLocalUser" requirePermission="false" />
    </sectionGroup>
  </configSections>
  <userSettings>
    <waspDatabaseManager.Properties.Settings>
      <setting name="sqlServerName" serializeAs="string">
        <value>INF24\WASPD EXPRESS</value>
      </setting>
      <setting name="BackupLocation" serializeAs="string">
        <value></value>
      </setting>
      <setting name="IntegratedSecurity" serializeAs="string">
        <value>True</value>
      </setting>
    </waspDatabaseManager.Properties.Settings>
  </userSettings>
</configuration>
```