

Wasp

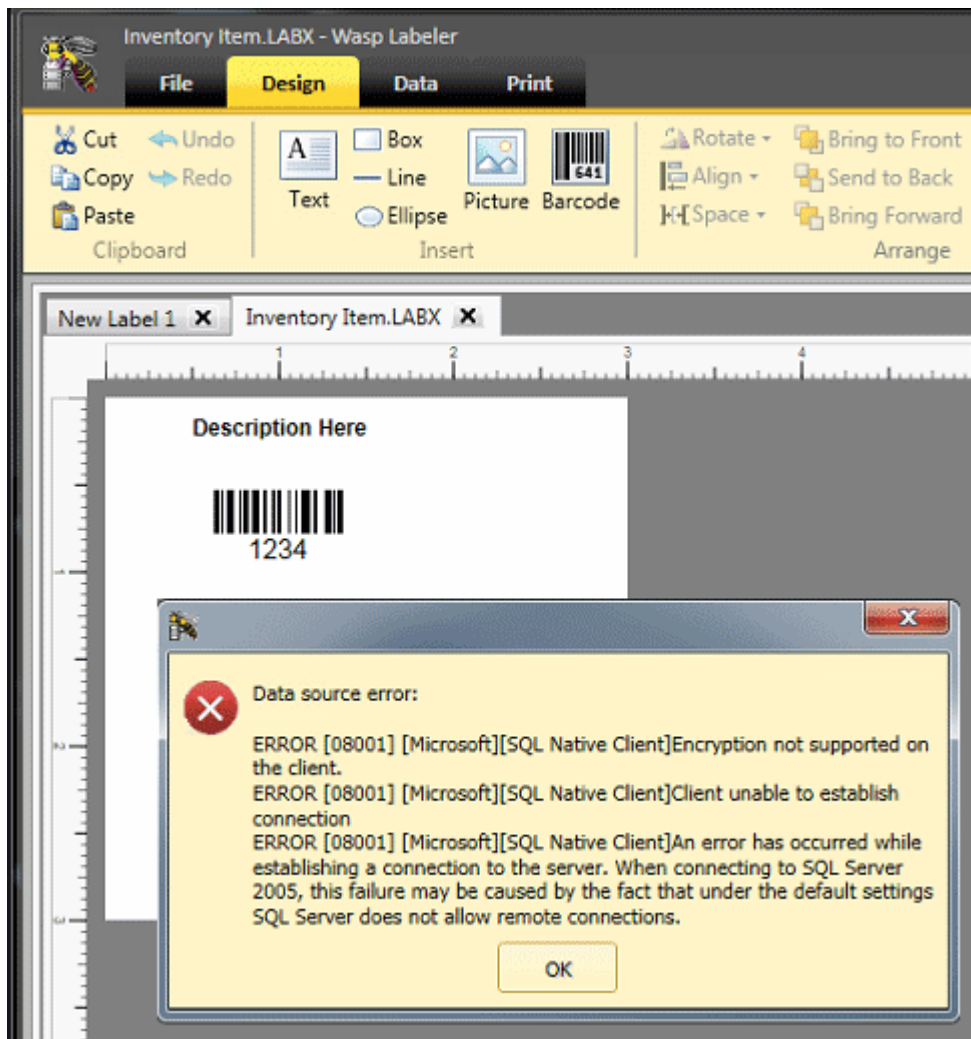
BARCODE TECHNOLOGIES

[Portal](#) > [Knowledgebase](#) > [Software](#) > [Labeler](#) > [Version 7](#) > [Labeler v7: Label linked to ODBC data source gives ERROR 08001 Encryption not supported on the client](#)

Labeler v7: Label linked to ODBC data source gives ERROR 08001 Encryption not supported on the client

Scott Leonard - 2017-11-21 - in [Version 7](#)

Opening a Labeler v7 file linked to an ODBC database (InventoryControl in this case) gives this error:



Data source error:

ERROR [08001] [Microsoft][SQL Native Client]Encryption not supported on the client.

ERROR [08001] [Microsoft][SQL Native Client]Client unable to establish connection

ERROR [08001] [Microsoft][SQL Native Client]An error has occurred while establishing a connection to the server. When connecting to SQL Server 2005, this failure may be caused by the fact that under the default settings SQL Server does not allow remote connections.

OK

Reestablishing the ODBC connection does not help. The SQL user and password are valid and mapped correctly in SQL.

Cause

In at least one case, the SQL Native Client (the driver used for the ODBC connection) was corrupt.

Resolution

Delete the ODBC connection.

In Programs and Features, uninstall Microsoft SQL Native Client.

Reinstall this component, either from the program's installation disc, or download here:

64-bit Windows: http://dl.waspbarcode.com/wasp/supportfiles/sqlIncli_x64.zip

32-bit Windows: <http://dl.waspbarcode.com/wasp/supportfiles/sqlIncli.zip>

Recreate the ODBC connection.

Related Pages

- [InventoryControl v7: Creating or Verifying the ODBC Connection for InventoryReader](#)
- [MobileAsset v7: Creating or Verifying the ODBC Connection for AssetReader](#)
- [MobileAsset v6: Creating or Verifying the ODBC Connection for AssetReader](#)