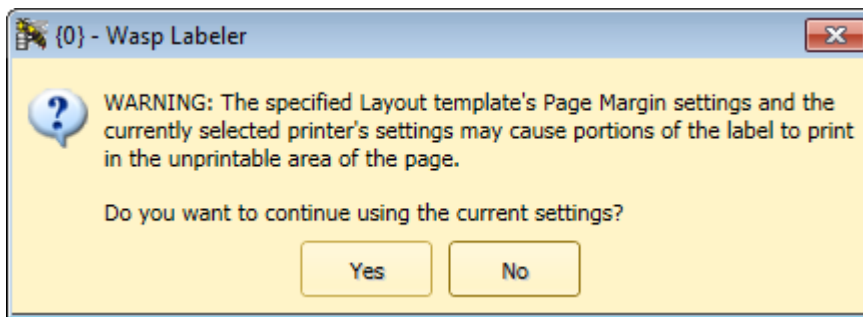


## Labeler v7: How to prevent "unprintable area" message at Print

Scott Leonard - 2025-01-07 - [Version 7](#)

When printing from Labeler v7, there is a message at print:

WARNING: The specified Layout template's Page Margin settings and the currently selected printer's settings may cause portions of the label to print in the unprintable area of the page. Do you want to continue using the current settings?



How do I prevent this message from appearing at every print job?

Set your layout's Page Margins for both Left and Top to a small value such as 0.001, Save, Done.

