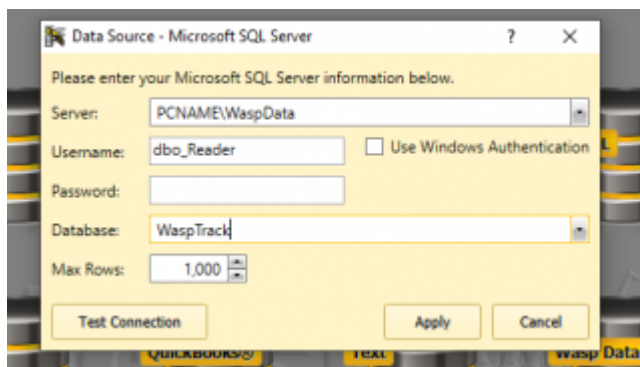


Labeler v7 - How To - Data Source connection to Cloud On-Prem

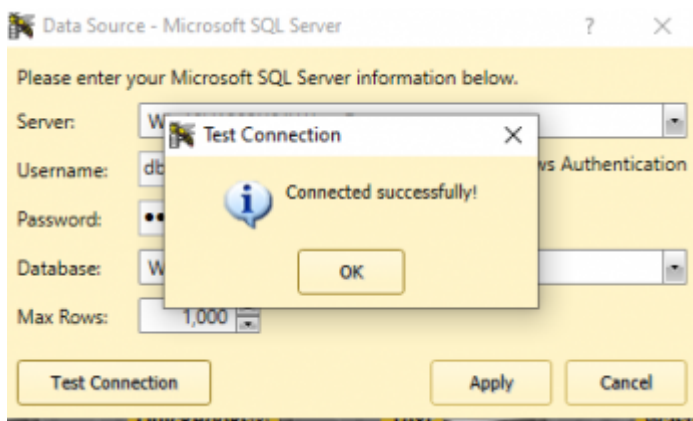
Stephen - 2023-01-19 - [Cloud](#)

When using Labeler v7 with a data source, you can use your cloud product as the data source.

1. Connect Labeler v7 to Cloud via the MSSQL option on the data tab and you will get this.



2. Substitute PCNAME for your PC's name
3. UserName - dbo_Reader
4. Password - db0_Re4der-P455w0rd
5. Database - WaspTrack
6. Test the connection



7. Then Apply

8. You will then have the option to choose which data to use from the pull down.

Data Source: WaspTrack

Refresh Data | Edit Connection | Remove Connection | Sort | Filter | Join

Row Count: 13

address

- address
- address_type
- advanced_quick_filter
- app_option
- asset
- asset_class
- asset_contract
- asset_geo_location
- asset_purchase_detail

2000100007	5	2000100001	1399 E. Mfg. Way
2000100008	5	2000100002	
2000100009	5	2000100003	