

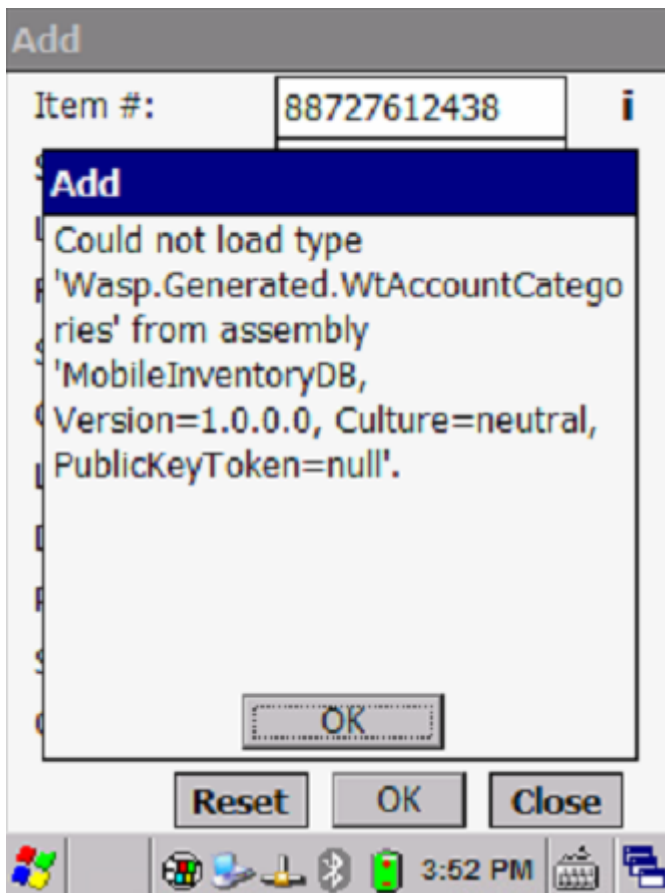
[Knowledgebase](#) > [Discontinued Products](#) > [InventoryControl](#) > [Version 7](#) > [InventoryControl v7: Using a mobile device in wireless mode, attempting transactions gives error: Could not load type 'Wasp.Generated.WtAccountCategories' from assembly 'MobileInventoryDB...](#)

## InventoryControl v7: Using a mobile device in wireless mode, attempting transactions gives error: Could not load type 'Wasp.Generated.WtAccountCategories' from assembly 'MobileInventoryDB...

Scott Leonard - 2025-01-06 - [Version 7](#)

### Symptoms

- InventoryControl v7.2.3: Using a mobile device in wireless mode, attempting transactions gives error: Could not load type 'Wasp.Generated.WtAccountCategories' from assembly 'MobileInventoryDB, Version=1.0.0.0, Culture=neutral, PublicKeyToken=null'.



- WaspInventoryServices.log may contain the following error:

Here are the error detail traces :

\*\*\*\*\*

```
at Wasp.Rules.Inventory.WtItemRules..ctor(WtSecurityRules rulesSecurity)
| at Wasp.Inventory.Service.InventoryService.SearchForItem(String
sSearchValue, Boolean bSearchOnSN, Boolean& bMoreThanOneMatch, String& sSerialNumber,
```

WaspError& waspError)\*\*\*\*\*

**Cause**

On the service PC, the folder C:\Program Files (x86)\Wasp Technologies\InventoryControl\Services contains files with the extension .rra which indicate a patch or installation has been run to conclusion, but that process couldn't update files that were in use, and the PC was not rebooted.

**Resolution**

Reboot the PC/server where Wasp Inventory Windows Service is running.