

InventoryCloud: Installing to WDT92 via data cable (connected to PC)

Scott Leonard - 2025-01-07 - [Cloud](#)

This procedure details the steps needed to install the InventoryCloud mobile program to the WDT92 mobile device over a data cable.

Connect the device via USB to a Windows PC, so that it shows as connected in Windows Mobile Device Center. If needed, troubleshoot with procedures documented elsewhere.

On the PC:

Download and save the following 3 files to the PC's drive:

<https://download.waspinventorycloud.com/mobile/InventoryCloudPPC.CAB>

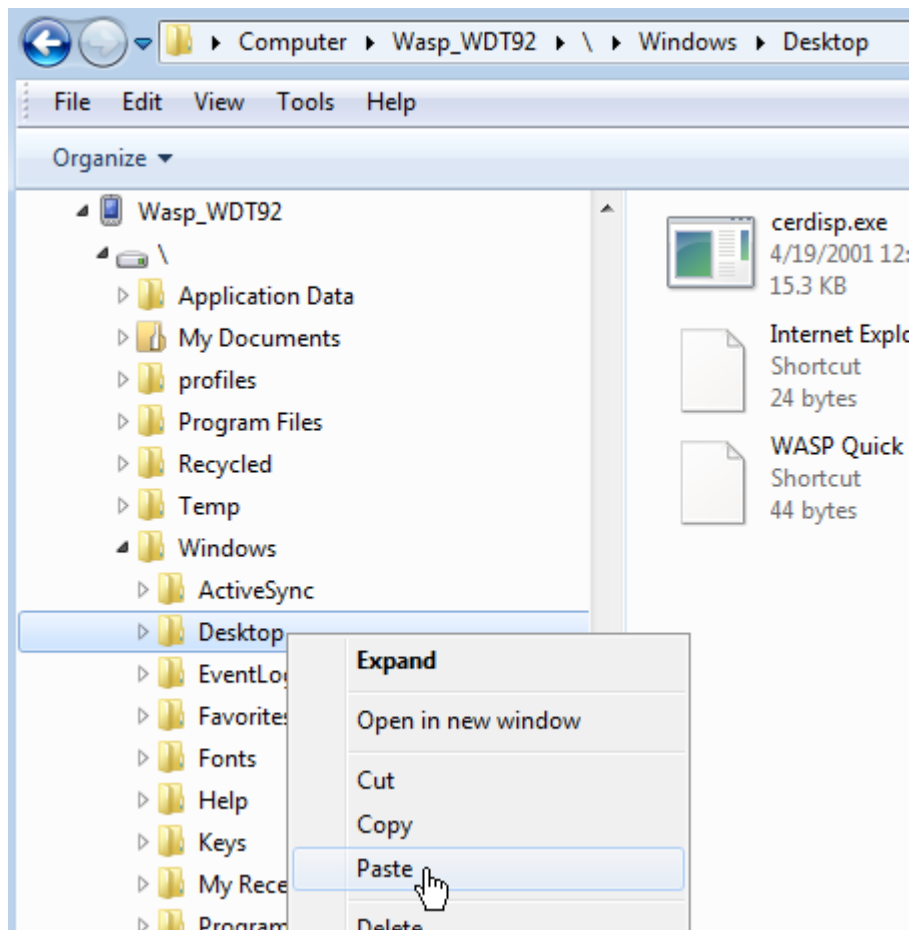
<https://download.waspinventorycloud.com/mobile/sql.wce5.armv4i.CAB>

<https://download.waspinventorycloud.com/mobile/sqlce.wce5.armv4i.CAB>

Use Windows File Explorer to navigate to this mobile device path:

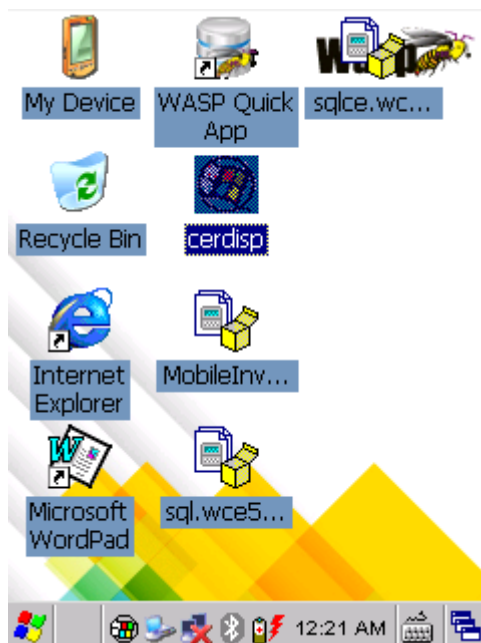
\\Windows\Desktop

Right-click the Desktop folder, then Paste.



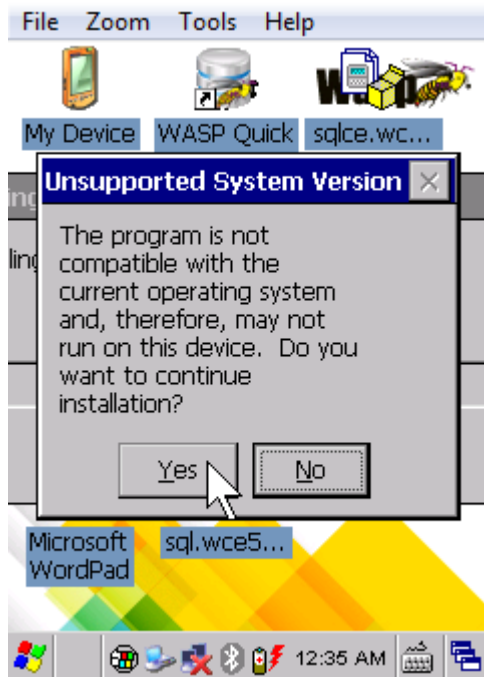
On the device:

You should see these files appear on the device's desktop screen.

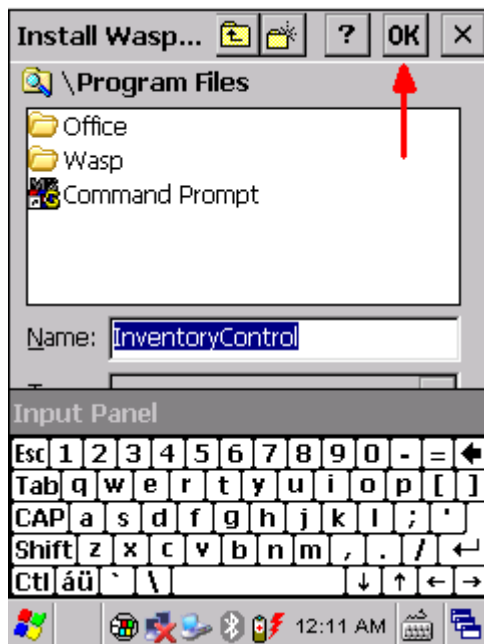


Double-tap to install each of the 3 files from the list above (the order of installation does not matter).

Tap Yes to continue on any message about "Unsupported System Version".



In the screen asking where to save the file, do not change anything; just tap the OK button at the upper right corner.



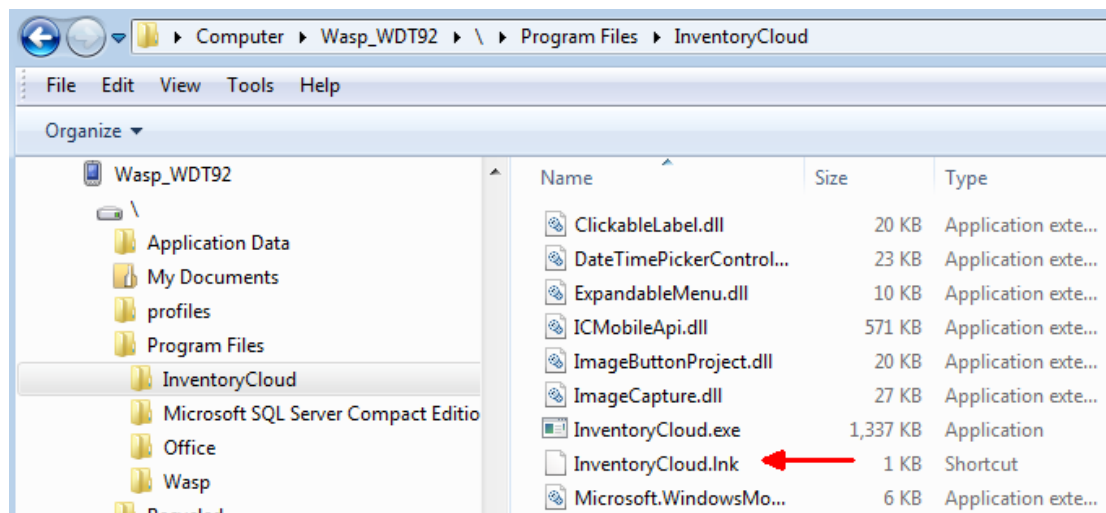
Repeat the process until all three listed files are completed.

On the PC:

Use Windows File Explorer to navigate to this mobile device path:

\\Program Files\\InventoryCloud

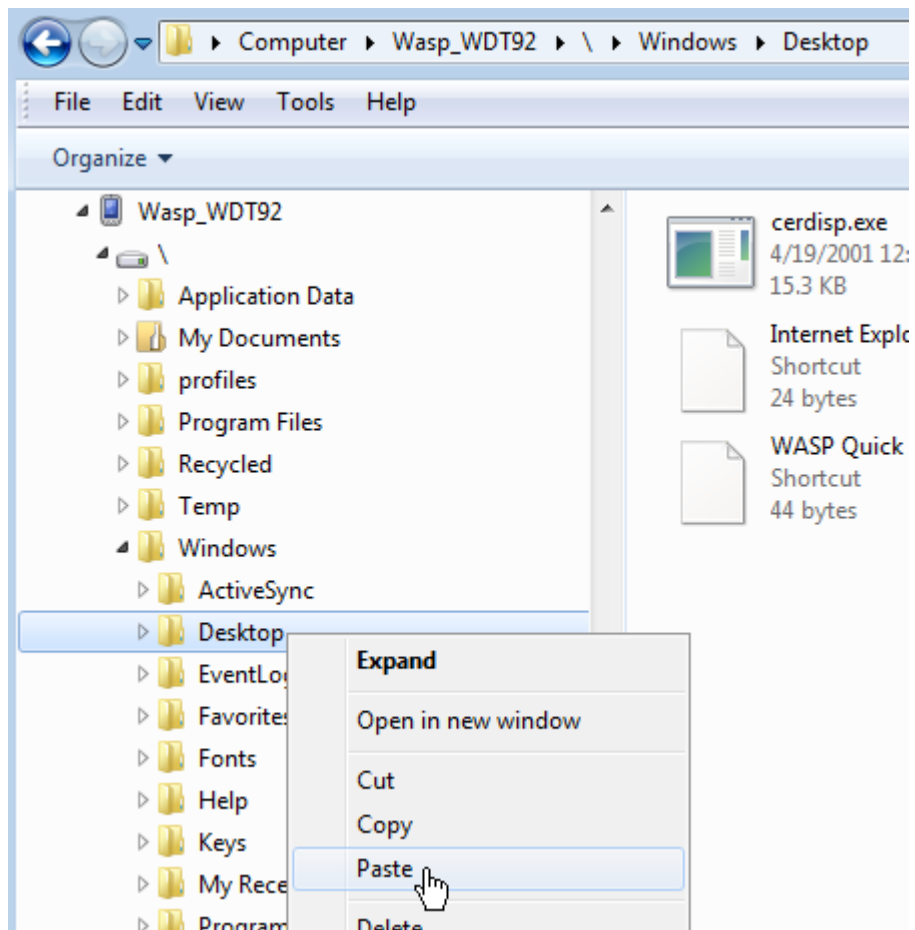
Right-click and copy the InventoryCloud.lnk file. This is a 1 KB file of type Shortcut.



Use Windows File Explorer to navigate to this mobile device path:

\\Windows\\Desktop

Right-click the Desktop folder, then Paste.



On the device, you should see the InventoryCloud shortcut. It is ready to use.



Note: If you get the following message when attempting to log into InventoryCloud...

Error logging in. Error calling MobileAccountLogin:



... the device doesn't have internet access. See the link below in Related Pages: "WDT92 connection to wifi network" then retry the InventoryCloud login.

Related Content

- [WDT92 connection to wifi network \(WiLink, WCU\)](#)
- [WDT90 & WDT92 Mobile Computer: How to perform a Warm Boot, Cold Boot, or Clean Boot](#)