



# WASP PROTECT

Portal > Knowledgebase > Hardware > Mobile Computers > DT10: Adjusting memory settings

## DT10: Adjusting memory settings

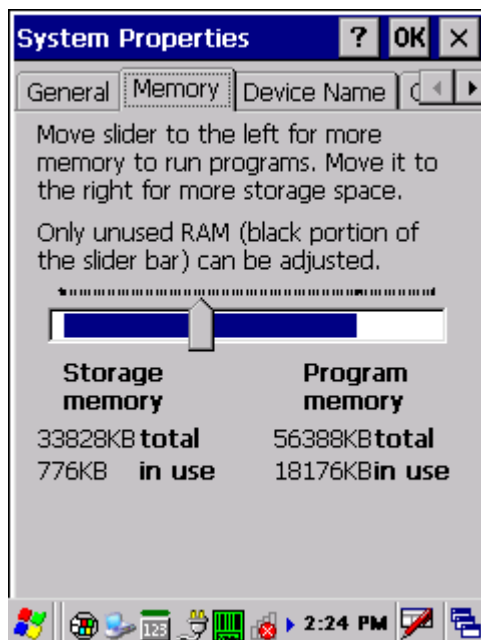
Scott Barnett - 2017-04-10 - in Mobile Computers

Start, Settings, Control Panel. System, Memory tab.

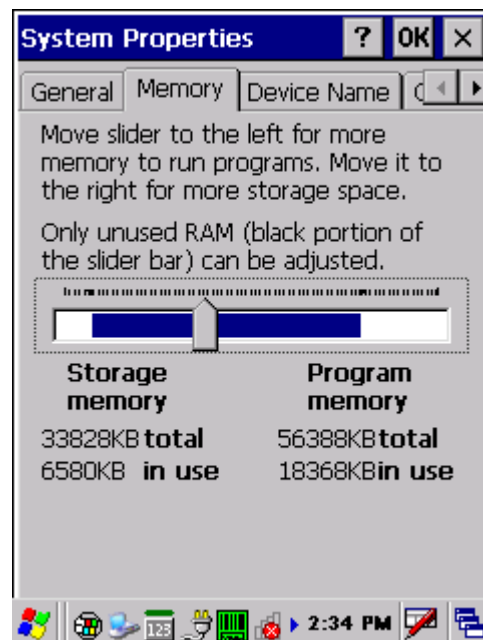
Default Settings after Cold Boot:

Storage Memory: 33828 KB total, 764 KB in use.

Program Memory: 56388 KB total, 16980 KB in use.



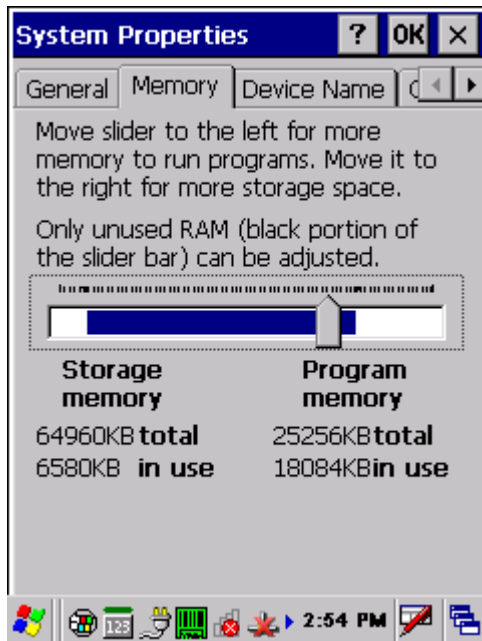
Just after a Cold Boot (with a remote control app using about 1200 KB Program memory)



Running CountIt with a 3-item file.

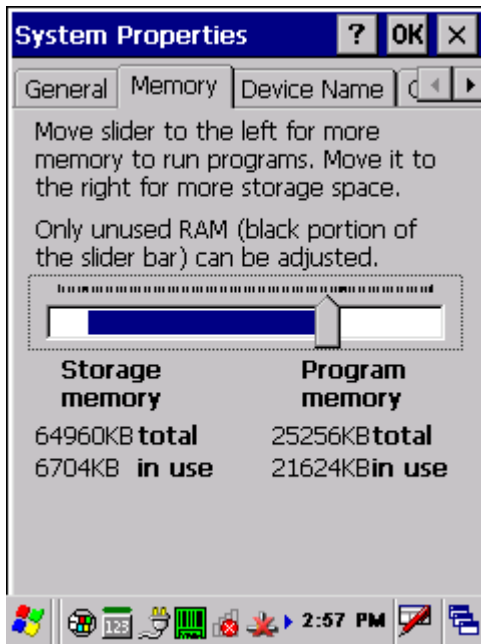
---

If you're getting out-of-memory messages while using an app on the device, adjust the slider to the right so there is more Storage memory, and less Program memory. Keep the Program memory total around 5000-10000 KB more than the "in use" value. Tap OK when done. It may be necessary to experiment with various memory settings to find one that works best for you.

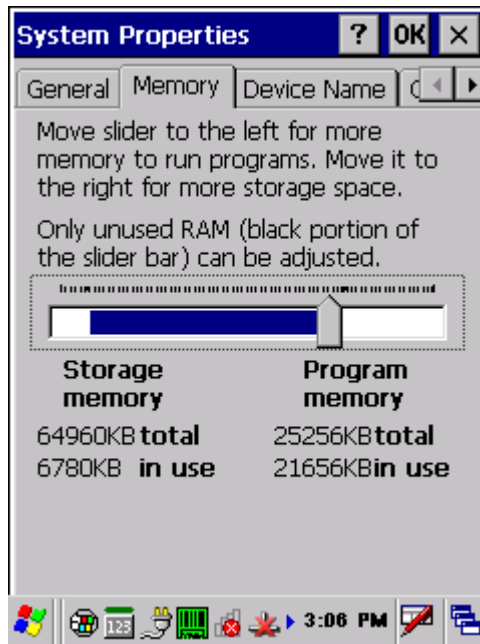


---

In limited testing, CountIt used 3540 KB of Program memory when running with a tiny file with 3 items, and 3572 KB when running with 2500 items. The 2500-item CSV file is about 42 KB on the PC's disk, and uses about 76 KB of Storage memory on the DT10.



Running CountIt with a 3-item file.



Running CountIt with a 2500-item file.

#### Related Pages

- [Mobile Device User Manuals, Programming Reference Guides, Quick Reference Guides, Quick Start Guides \(multiple models\)](#)