

Wasp

BARCODE TECHNOLOGIES

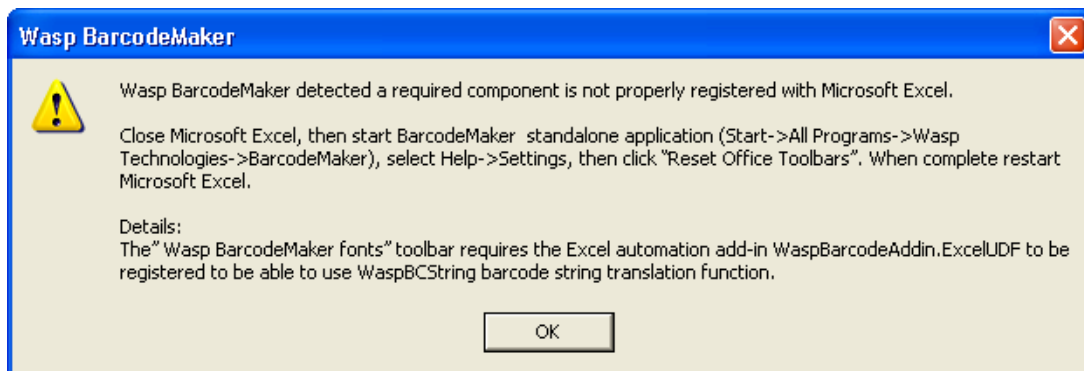
[Portal](#) > [Knowledgebase](#) > [Software](#) > BarcodeMaker: Error: BarcodeMaker detected a required component that is not properly registered with Microsoft Excel.

BarcodeMaker: Error: BarcodeMaker detected a required component that is not properly registered with Microsoft Excel.

Scott Leonard - 2023-01-20 - in Software

Symptoms:

Using Microsoft Excel, you receive an error message when attempting to use BarcodeMaker:



Wasp BarcodeMaker detected a required component is not properly registered with Microsoft Excel.

SOLUTION:

Follow the instructions in the error message.

Close Microsoft Excel, then start BarcodeMaker standalone application (Start->All Programs->Wasp Technologies->BarcodeMaker), select Help->Settings, then click "Reset Office Toolbars". When complete restart Microsoft Excel.