



WASP PROTECT

Portal > Knowledgebase > Hardware > Mobile Computers > Windows Mobile Device Center: Device Connection Settings in the Registry

Windows Mobile Device Center: Device Connection Settings in the Registry

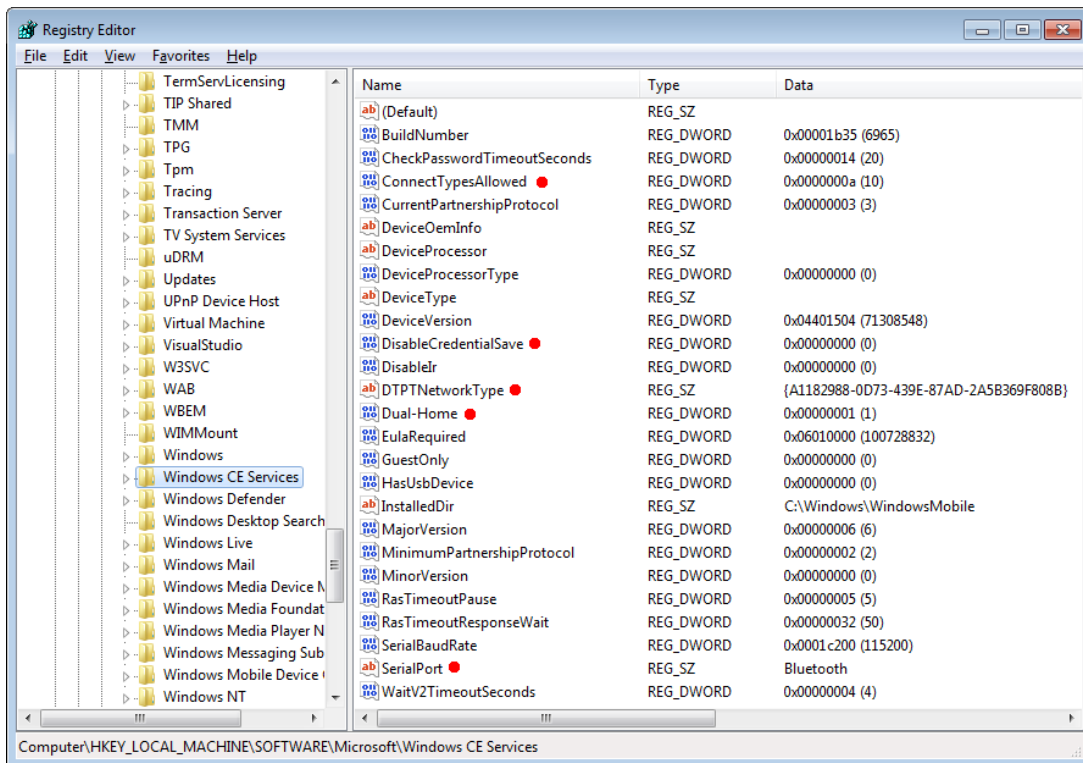
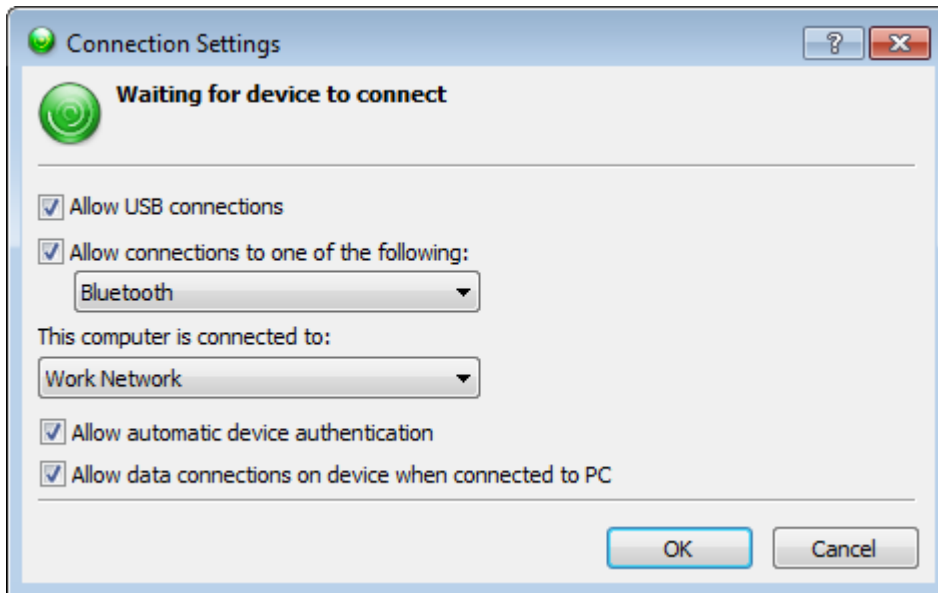
Scott Kircher - 2018-03-27 - in Mobile Computers

Occasionally, due to problems between Windows and Windows Mobile Device Center, it is not possible to change device settings in Windows Mobile Device Center, Mobile Device Settings, Connection Settings. For example, the WMDC main screen never appears properly, but the ActiveSync connection is successfully created. MyMobiler is able to connect to the device, and some aspects of Wasp software device connectivity are successful (e.g. software setup). It is possible to edit the registry directly to set the desired WMDC settings.

Registry path to the settings:

Computer\HKEY_LOCAL_MACHINE\SOFTWARE\Microsoft\Windows CE Services

A table with the WMDC settings and corresponding registry values is below (with indications for recommended values).



WMDC (* = recommended setting)	Registry
Allow USB connection unchecked Allow connections to one of the following unchecked	ConnectTypesAllowed = 0x00000000 (0)
Allow USB connection unchecked Allow connections to one of the following checked	ConnectTypesAllowed = 0x00000002 (2)

Allow USB connection checked Allow connections to one of the following unchecked	ConnectTypesAllowed = 0x00000008 (8)
Allow USB connection checked * Allow connections to one of the following checked *	ConnectTypesAllowed = 0x0000000a (10)
Allow connections popdown	SerialPort
Choices such as Bluetooth, COM1, etc. as available on the PC	
This computer is connected to	DTPTNetworkType
Automatic	{0}
Work Network *	{A1182988-0D73-439E-87AD-2A5B369F808B}
The Internet	{436EF144-B4FB-4863-A041-8F905A62C572}
Allow automatic device authentication	DisableCredentialSave
Unchecked	0x00000001 (1)
Checked *	0x00000000 (0)
Allow data connections on device when connected to PC	Dual-Home
Unchecked	0x00000000 (0)
Checked *	0x00000001 (1)

For advanced users, here are the recommended settings ready for a .reg file:

Windows Registry Editor Version 5.00

```
[HKEY_LOCAL_MACHINE\SOFTWARE\Microsoft\Windows CE Services]
"ConnectTypesAllowed"=dword:0000000a
"SerialPort"="Bluetooth"
"DTPTNetworkType"="{A1182988-0D73-439E-87AD-2A5B369F808B}"
"Dual-Home"=dword:00000001
"DisableCredentialSave"=dword:00000000
```

Related Pages

- [Windows Mobile Device Center \(WMDC\) Troubleshooting Resources](#)
- [Windows Mobile Device Center and Windows 10](#)
- [WDT60: Network configuration to enable name resolution and/or internet browsing](#)
- [HC1 & WPA1000-II: Network configuration to enable name resolution and/or internet browsing](#)