

Wasp

BARCODE TECHNOLOGIES

Portal > Knowledgebase > Hardware > Mobile Computers > Windows Mobile/CE devices:
Summit is Unable to select a profile with WPA2 and TKIP.

Windows Mobile/CE devices: Summit is Unable to select a profile with WPA2 and TKIP.

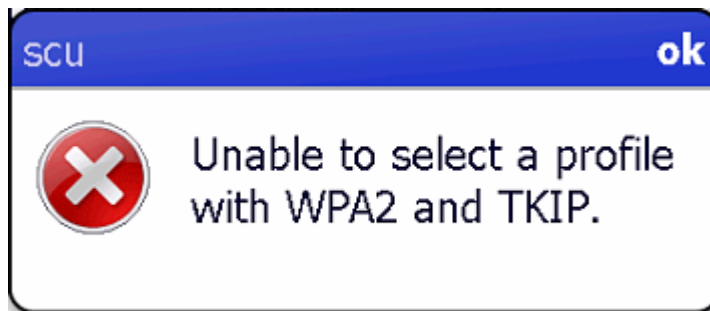
Scott Leonard - 2018-02-28 - in Mobile Computers

Symptom

Using a mobile computer's Summit Client Utility, when scanning for and selecting a wireless network, the following message appears:

scu

Unable to select a profile with WPA2 and TKIP.

**Cause**

The router or wireless access point is not advertising its encryption properly, or the device is unable to interpret the encryption offer.

Resolution

Determine the required encryption type (if necessary, check the settings for the router or wireless access point), then create and configure a wireless profile manually, as described in the KB article in Related Pages below: "Windows Mobile/CE devices: How to connect to an unadvertised wifi network (SSID) via the Summit Client Utility (manual setup)".

This procedure has resolved a situation where the encryption was WPA2-AES with EAP Type MSCHAPv2.

Related Pages

- [Mobile Device User Manuals, Programming Reference Guides, Quick Reference Guides, Quick Start Guides \(multiple models\)](#)
- [Windows Mobile/CE devices: How to connect to an unadvertised wifi network \(SSID\) via the Summit Client Utility \(manual setup\)](#)
- [Summit Client Utility: How to set up wireless, and choose from multiple SSIDs \(wireless networks\)](#)