

Wasp

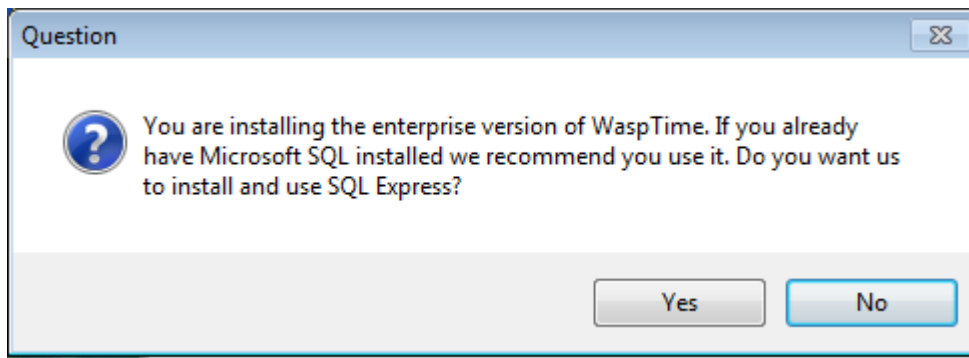
BARCODE TECHNOLOGIES

Portal > Knowledgebase > Software > WaspTime > Version 7 > WaspTime 7 Enterprise:
How do I direct the database creation to my full version SQL instance?

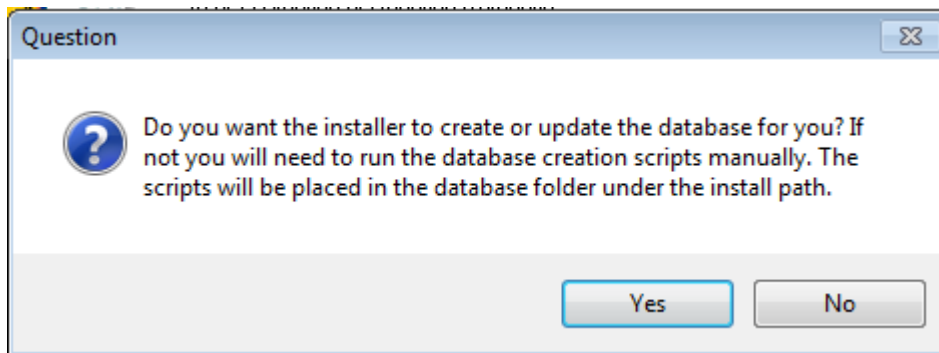
WaspTime 7 Enterprise: How do I direct the database creation to my full version SQL instance?

Jason Whitmer - 2018-03-21 - in Version 7

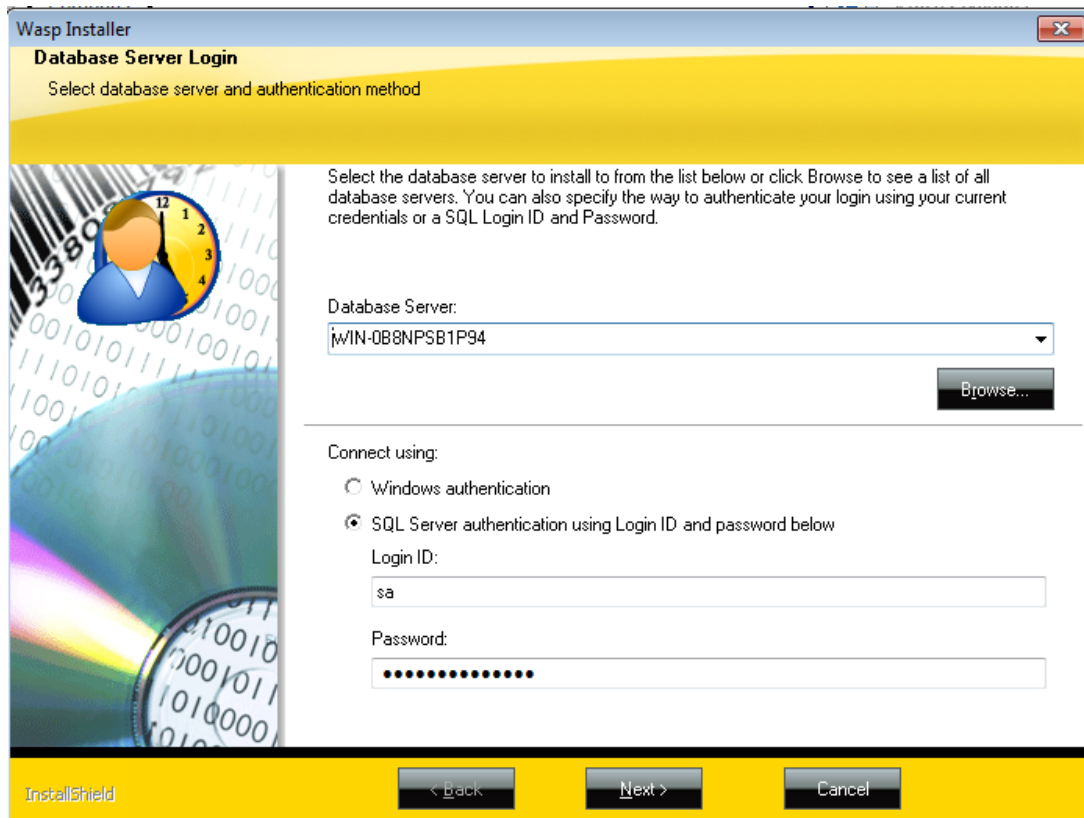
During installation of WaspTime, after entering the serial number, it will prompt you for which components to install. If you check the box for the Database, it will show you the following prompt when it begins the database portion of the installation:



If you click Yes, the installer will create a SQL 2005 Express instance named WASPDBEXPRESS, and will create the database in that instance. If you say No, it will display this prompt:



If you click No, then you will need to manually run NewWaspTime6.sql and WaspTime7.sql on your SQL Server to create the database. If you click Yes, it will give the following prompt:



Database Server will automatically populate with the local machine name. This can be

changed to a different machine name if SQL is not running locally. To install to the default unnamed SQL instance, enter just the server name. To install to a different named instance, enter the machine name\instance name. E.g., WIN-0B8NPSB1P94\MYOWNINSTANCE. The installation will then proceed to run the database creation scripts in the specified SQL Server instance.