

# Wasp

## BARCODE TECHNOLOGIES

Portal > Knowledgebase > FAQs > Using InventoryCloud Export Scripts

---

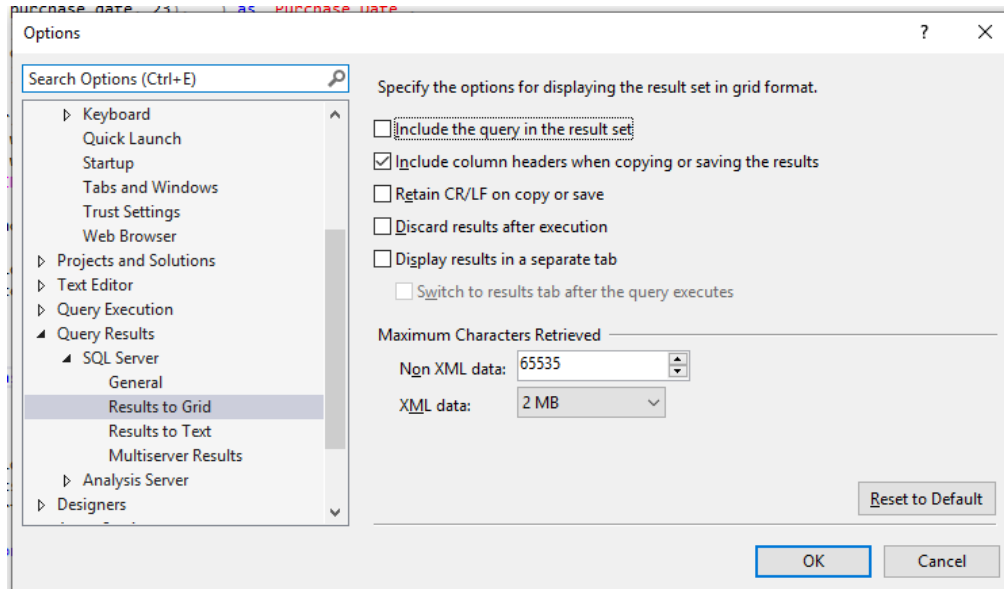
### Using InventoryCloud Export Scripts

Russ Hart - 2023-01-19 - in FAQs

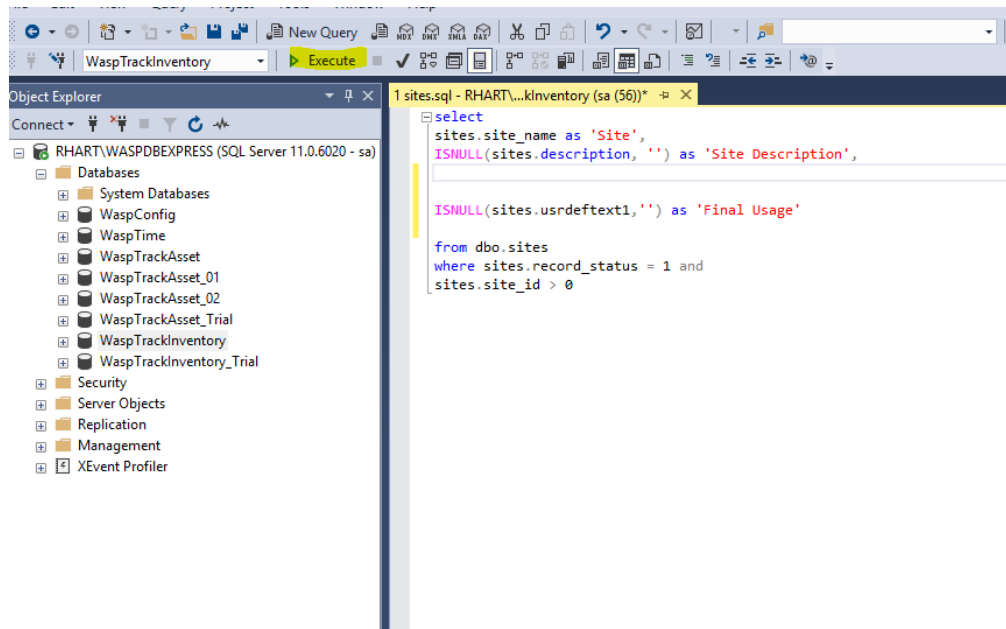
1. **Transaction history, purchase orders and pick orders cannot be exported from InventoryControl or imported into InventoryCloud.**
2. In order for the export scripts to work properly you need to use **SQL Server Management Studio 2016 or newer**  
**\*Note: This is not merely a recommendation. The export will not work properly in earlier versions of SSMS (not even the version of SSMS installed with InventoryControl v7 by default).**
3. **SQL Server Management Studio 2018** can be downloaded here

<https://docs.microsoft.com/en-us/sql/ssms/download-sql-server-management-studio-sms?view=sql-server-ver15>

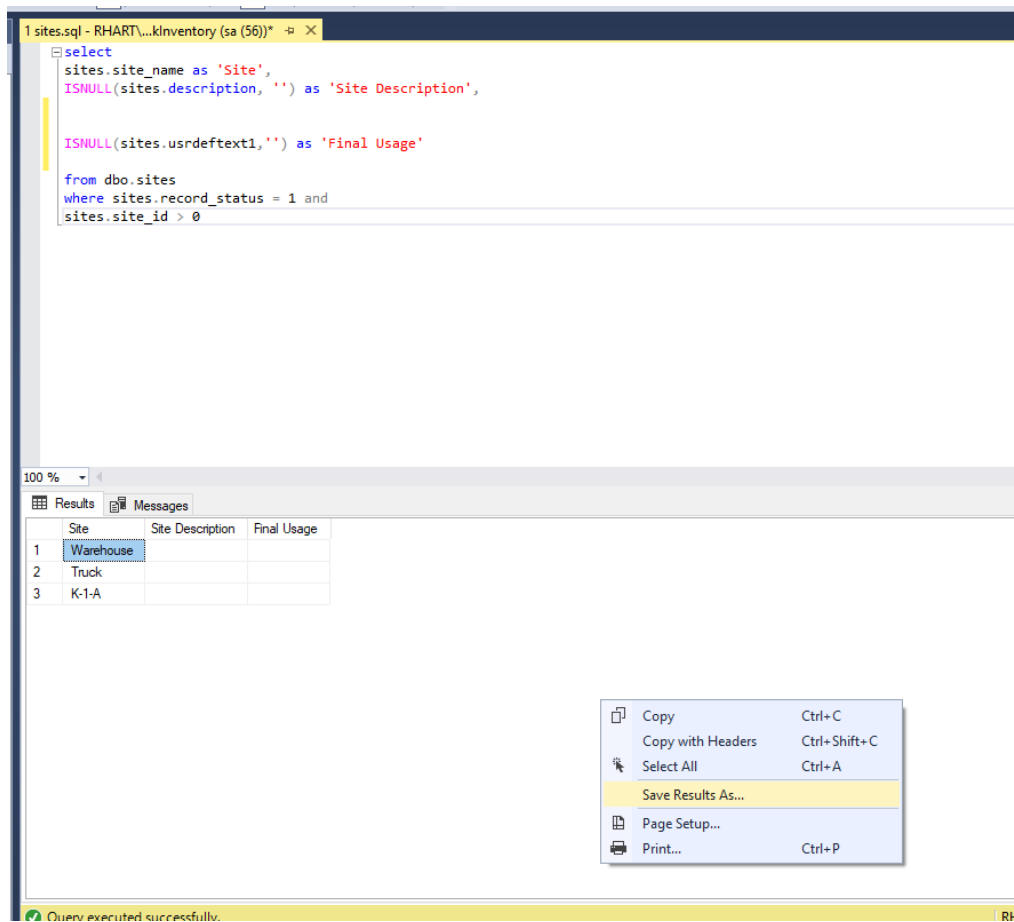
4. [Download the scripts](#) and extract them to a folder
5. Login to SQL Server Management Studio using **sa** and **Wasp\$07Wasp\$07** for user name and password (Enterprise users with your own SQL Server may be different)
6. In SQL Server Management System go to Tools > Options > Query Results > SQL Server > Results to Grid and ensure that "Include column headers when copying or saving the results" is checked.



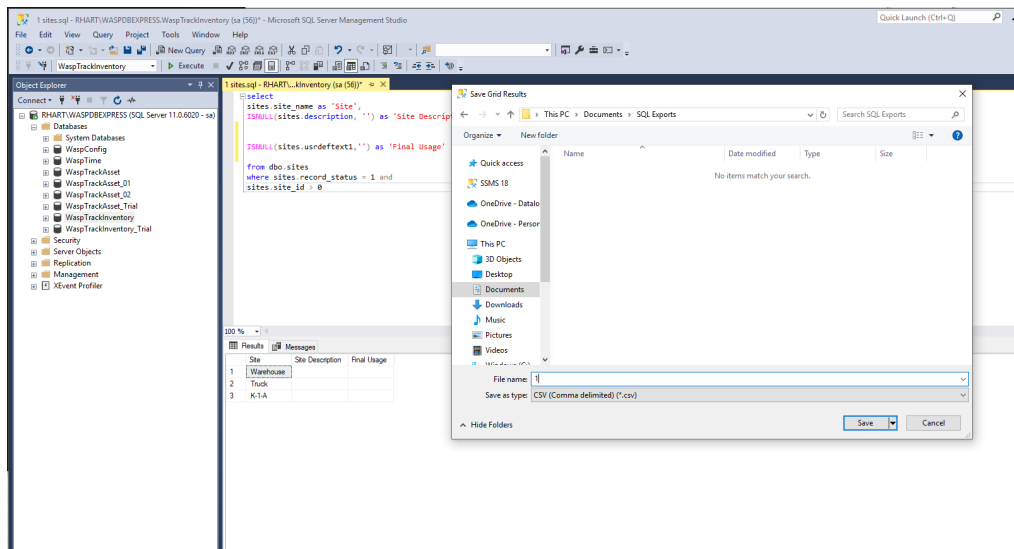
7. In SQL Server Management Studio, make sure that WaspTrackInventory is selected, then click on File > Open File. Choose the appropriate SQL Script.
8. Click on Execute



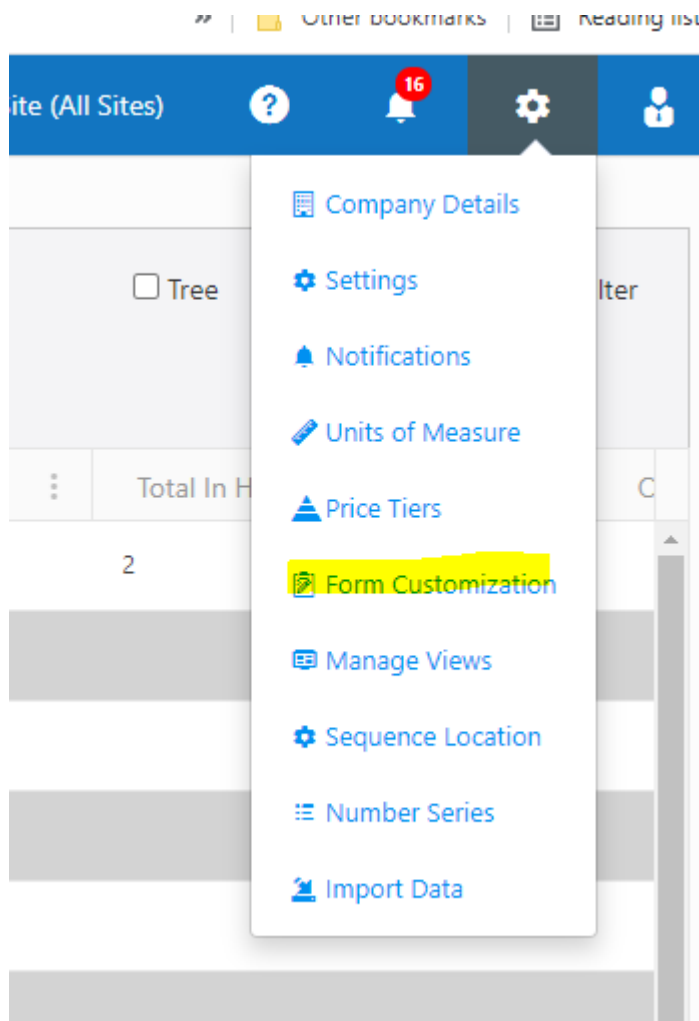
9. Once it has executed successfully right click in an empty space and choose Save Results As



Give the file a name associated with the number and name of the sql file that produced it.



10. Export your data using all number scripts. If there are no results you do not need to save the file.
11. Once all files have been saved, open InventoryCloud. Click on the gear icon and choose Form Customization



- Open the file created by 00\_CustomFields.sql and create a custom field for each row.

**Form Customization**  
You can add and edit the fields that can appear on each page. You can also add custom fields; if you delete a custom field, it will also delete the related data in the application.

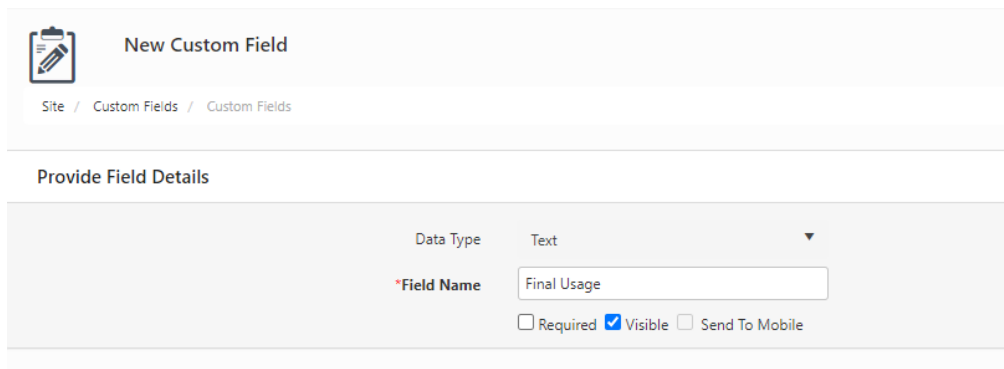
**Choose Form**  
To add a custom field, select the Module, then select Tab and Section, then select New. These modules support custom fields: Item, Item Type, Customer, Funding, Location, Manufacturer, Site and Vendor.

Form: **Site** Tab: **Custom Fields** Section: **Custom Fields**

**New** **Delete** Show Filter

Field Name	Customized Field	Data Type	Visible	Required	Send To Mobile

Click on New, choose the data type and type your field name and click Visible



The image shows a web interface for creating a new custom field. At the top, there is a header bar with a clipboard icon and the title "New Custom Field". Below the header, a breadcrumb trail reads "Site / Custom Fields / Custom Fields". The main section is titled "Provide Field Details". It contains a "Data Type" dropdown menu set to "Text". Below this, the label "\*Field Name" is followed by a text input field containing "Final Usage". At the bottom of the form, there are three checkboxes: "Required" (unchecked), "Visible" (checked), and "Send To Mobile" (unchecked).

Then click Save at the bottom of the screen

13. After creating all of your custom fields you should be able to import your data using the files you saved from the database, in the order listed.

\*\*\*\***Note:** Be advised that users with the basic edition of the software may not have the ability to import sites, this will cause all subsequent form numbers to be off by one.

If you have images or attachments in InventoryControl, you can use the article below to import them into your InventoryCloud

<https://support.waspbarcode.com/kb/articles/assetcloud-inventorycloud-how-can-we-import-the-attachments-from-mobileasset-inventorycontrol>