

# Wasp

## BARCODE TECHNOLOGIES

Portal > Knowledgebase > Discontinued Products > MobileAsset > Version 7 > Patch doesn't update component(s) of InventoryControl or MobileAsset

---

### Patch doesn't update component(s) of InventoryControl or MobileAsset

Scott Leonard - 2023-01-20 - in Version 7

#### **Symptom**

After running a minor-version patch (e.g. from v7.0 to v7.1) for InventoryControl or MobileAsset, one or more components that are installed on the PC are not updated to the new version.

#### **Cause**

The registry value that keeps track of the installation status of that component is set to 0.

0 means "don't install". 1 means "install".

#### **Resolution**

Use Registry Editor (regedit) to change the value to 1.

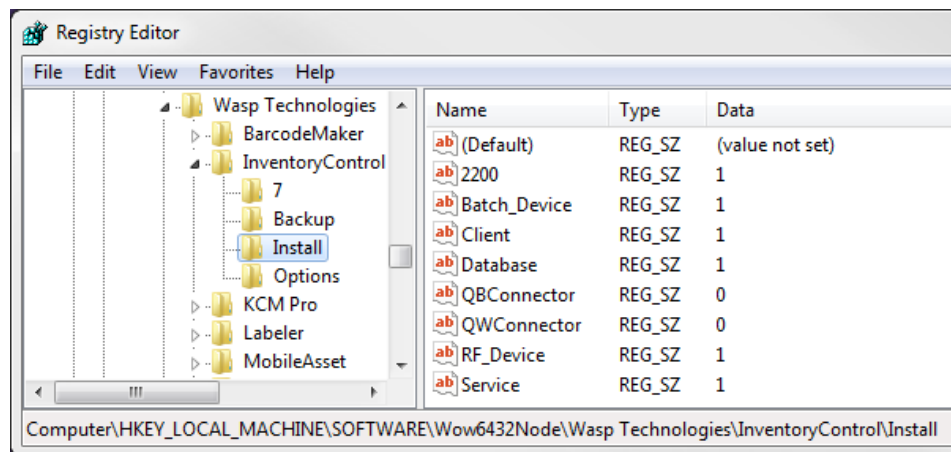
1. Navigate to the following location, appropriate to the Wasp program and your version of Windows:

2. InventoryControl:

64-bit Windows:

Computer\HKEY\_LOCAL\_MACHINE\SOFTWARE\Wow6432Node\Wasp Technologies\InventoryControl\Install

32-bit Windows: Computer\HKEY\_LOCAL\_MACHINE\SOFTWARE\Wasp Technologies\InventoryControl\Install



2200: Files for the WDT2200 mobile device.

Batch\_Device: Files for Windows Mobile/CE devices in Batch mode.

Client: Front-end user interface program that runs on a PC.

Database: The SQL database where the data is stored.

QBConnector: QuickBooks Connector module.

QWConnector: QuoteWerks Connector module.

RF\_Device: Files for Windows Mobile/CE devices in Wireless mode.

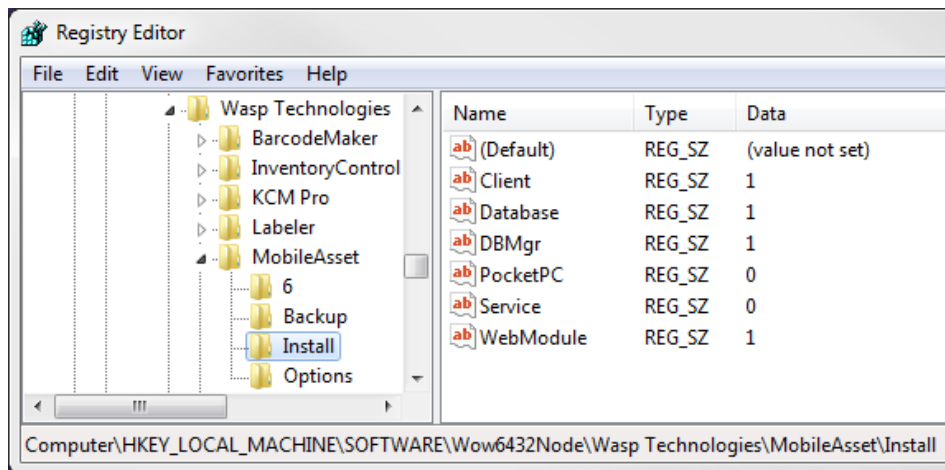
Service: The Wasp Inventory Windows Service, used for license management and Wireless mobile device communication.

3. MobileAsset:

64-bit Windows:

Computer\HKEY\_LOCAL\_MACHINE\SOFTWARE\Wow6432Node\Wasp Technologies\MobileAsset\Install

32-bit Windows: Computer\HKEY\_LOCAL\_MACHINE\SOFTWARE\Wasp Technologies\MobileAsset\Install



Client: Front-end user interface program that runs on a PC.

Database: The SQL database where the data is stored.

DBMgr: Database Manager.

PocketPC: CAB files for Windows Mobile/CE devices.

Service: The Wasp MobileAsset Windows Service, used for license management and Wireless mobile device communication.

WebModule: MobileAsset Web.

4. In the right pane, double-click the component that isn't updating and set it to 1.
5. Rerun the patch.

### Related Pages

- [InventoryControl 7.3: Wireless mode mobile app reports "The user name that you entered does not have Mobility access. Logon denied." for users who do have Allow Mobile Device Login checked](#)