



WASP PROTECT

Portal > Knowledgebase > Software > MobileAsset > MobileAsset: How to backup, move and restore the database to a new server

MobileAsset: How to backup, move and restore the database to a new server

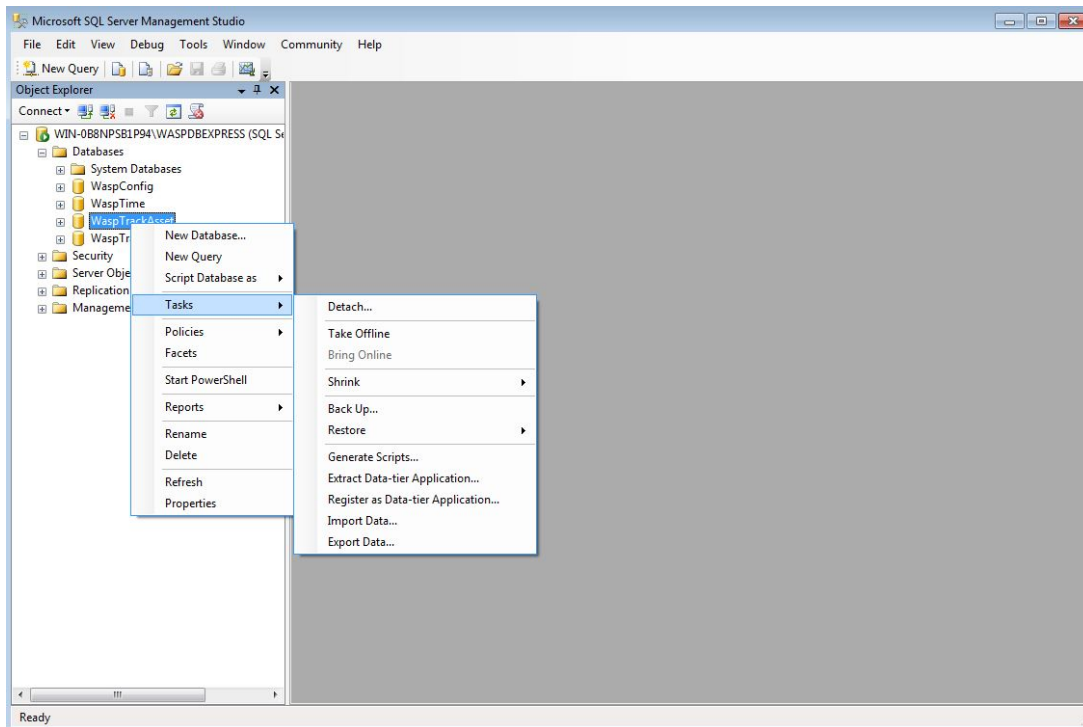
Internal User - 2017-12-05 - in MobileAsset

This article describes how to create and restore a MobileAsset backup with SQL Server Management Studio.

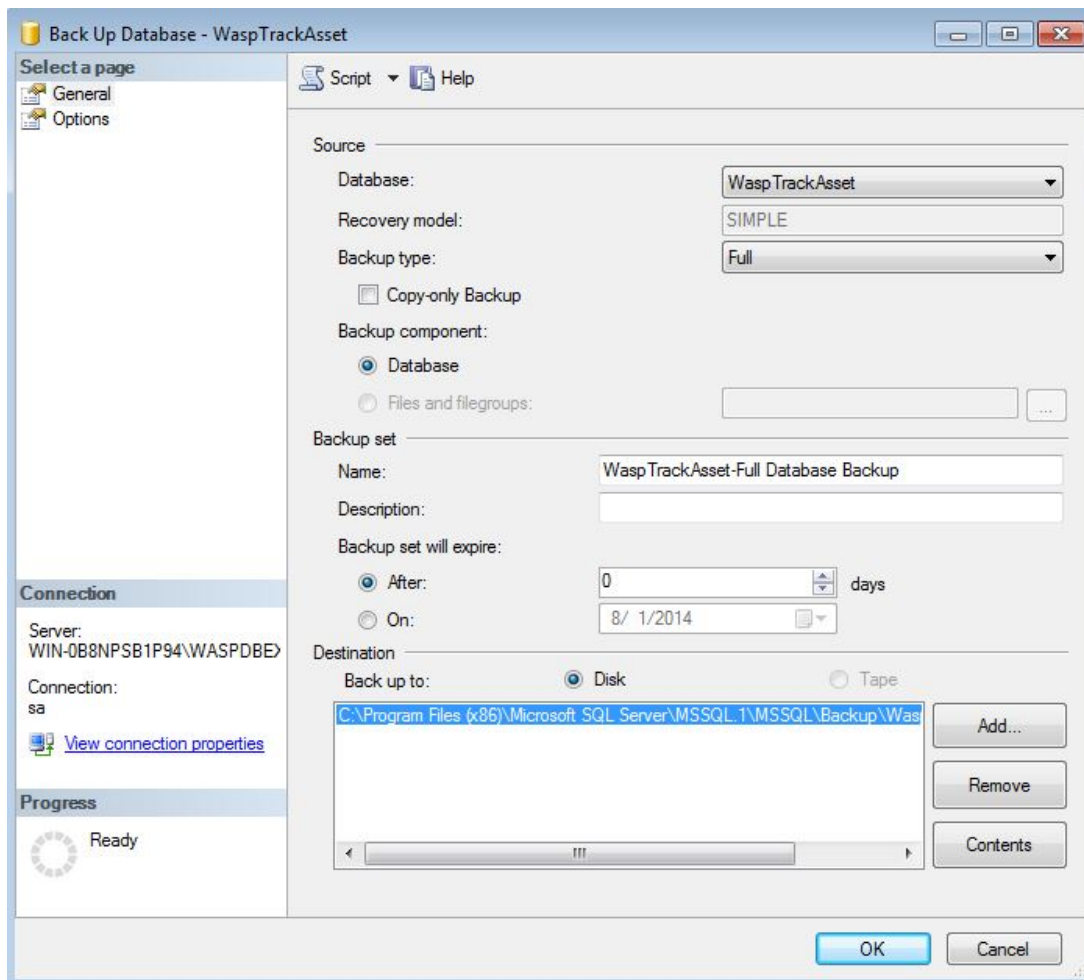
Follow these steps to move and restore the database to a new server. Be sure to install the program on the new server machine and choose the options to install the Database and Client tools if you are installing Pro or Enterprise.

1. Create a backup of the existing database.

- Click on **Start > Programs > Microsoft SQL Server > SQL Server Management Studio**.
- Login with username **sa** password **Wasp\$07Wasp\$07** hit connect (using **SQL Authentication**).
- Expand **Databases** on the left and **right click** on **WaspTrackAsset** > go to **Tasks > Backup**.



- Next to the lower **Destination** section of the Back Up Database - WaspTrackAsset window, first click Remove to remove anything currently shown in the box. Then, click Add. It will display the folder path for the installation. At the end of the path, add a filename for the backup that will be unique, like ServerMove.bak. Click OK on both windows to create the backup.



- Copy the backup file to C:\Program Files (x86)\Microsoft SQL Server\MSSQL10_50.WASPDBEXPRESS\MSSQL\Backup on the new server, or the appropriate backup folder if you are using Enterprise and have installed the database to a different SQL instance.

If the machine is running 32 bit version of Windows, it will be C:\Program Files\. If the machine is running SQL 2005 rather than the SQL 2008 installed by a new installation of MobileAsset v7, it will be MSSQL.1 rather than MSSQL10_50.WASPDBEXPRESS. As long as the backup file is placed into the backup folder in the default SQL path, you will be able to restore it by entering the filename to the restore box.

- (Click this link to download an empty, blank **MobileAsset v7.1** blank database for SQL 2008
R2: http://dl.waspbarcode.com/wasp/supportfiles/WaspTrackAsset_71_Blank.zip)
- (Click this link to download an empty, blank **MobileAsset v7.1** blank database for SQL 2005: <http://dl.waspbarcode.com/wasp/supportfiles/MA71SQL2005Blank.zip>)
- (Click this link to download an empty, blank **MobileAsset v7.0** blank database for SQL 2005: <http://dl.waspbarcode.com/wasp/supportfiles/MA7SQL2005Blank.zip>)
- (Click this link to download an empty, blank **MobileAsset v6.3** blank

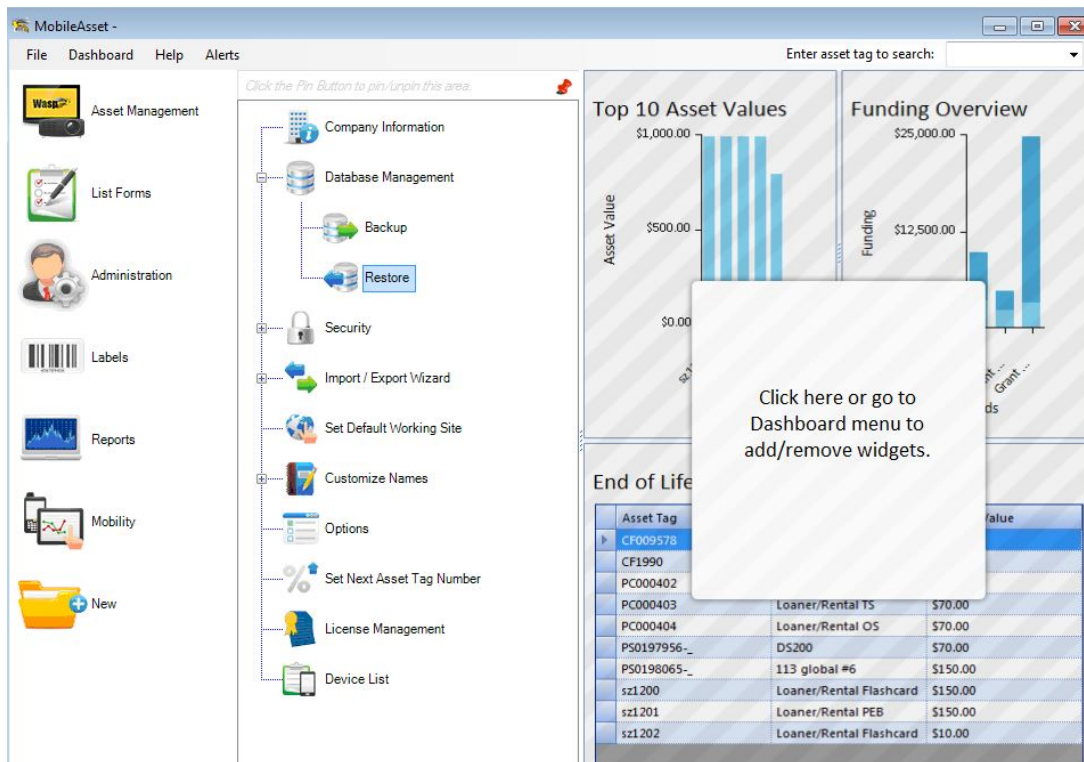
database: http://dl.waspbarcode.com/wasp/supportfiles/WaspTrackAsset_624_Blank.zip)

For Advanced Installation (skip this paragraph if you're creating a backup without any location modifications):

If you wish to hold your backups in a different directory than the default, copy the file to the directory of your choosing. It can be on a different local drive, but it **must be a local physical drive**, not a mapped network drive, or SQL will not be able to access it. If you place the backup in a different directory than the default, then before restoring it, you will need to go to MobileAsset's **Administration > Options**, then change the **SQL Server Backup Location** to enter the folder you chose. After restoring the backup, you will need to change that option again, as that setting is part of the backed up information, so it will be changed to whatever path was specified when the backup was created on the other machine. Depending on your Windows security, you may need to set this folder to either allow Everyone Read/Write access in the folder, or research how to determine the SQL Server user account name for your server machine and grant that account permission.

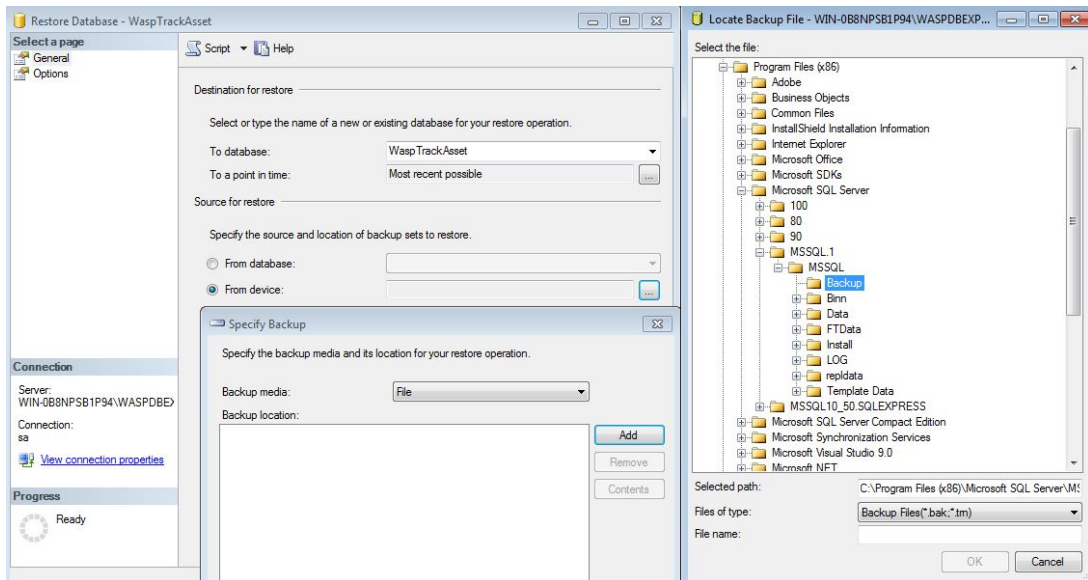
2. Restore the backup

- For the Standard version, open **MobileAsset** and login with the username **admin**, with **no password**, and go to **Administration > Restore**. Enter the filename for your backup and click **OK**. After it has restored, close the program and reopen it with the password you use from correct username and password.

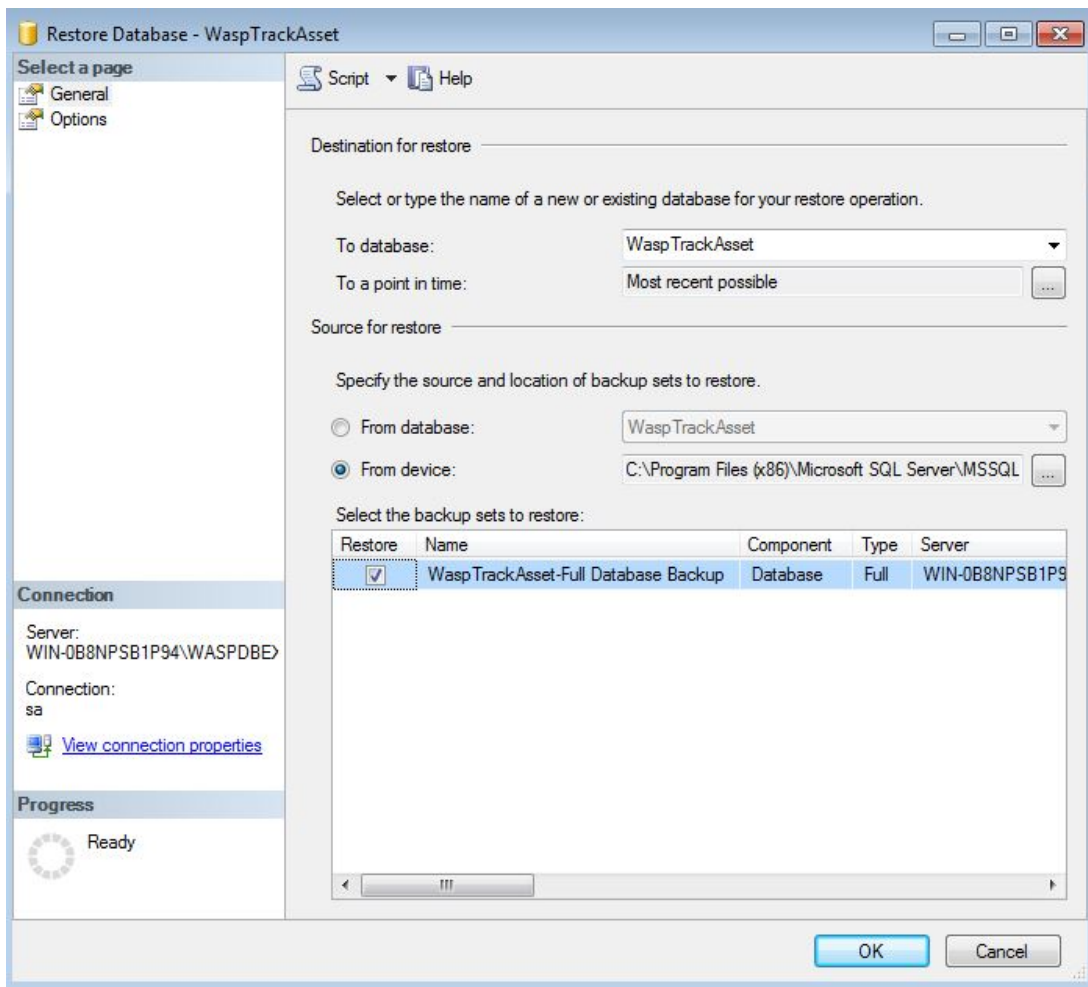


For the Pro or Enterprise version, you will need to restore the backup using SQL Server Management Studio.

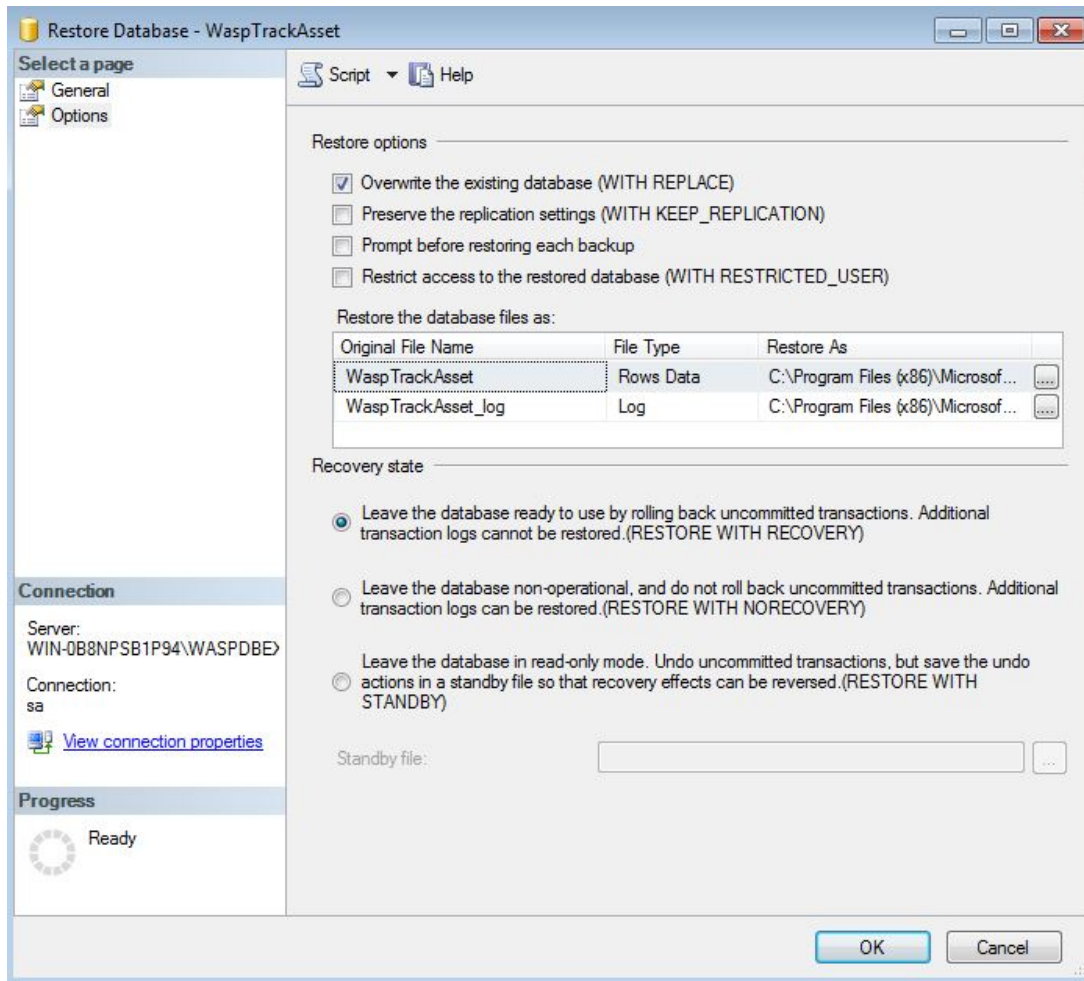
- Click on **Start > Programs > Microsoft SQL Server > SQL Server Management Studio**.
- Login with username **sa** password **Wasp\$07Wasp\$07** hit connect (using **SQL Authentication**).
- Expand **Databases** on the left and **right click** on **WaspTrackAsset > go to Tasks > Restore > Database..**
- Select the '**From device**' option and click on the browse (...) button > click on the '**Add**' button > change the 'Files of type' drop down to **All Files**.
- Navigate to the folder containing your database backup and select the file > click on **OK > click on OK**.



- In the lower '**Select the back sets to restore**' section of the Restore Database window, check the box next to the database set displayed.



- Click on 'Options' on the left of the window and check the box that says 'Overwrite the existing database'
- Finally click on OK at the bottom and the backup should start restoring.



- After the progress bar on the left reaches 100% the restore should be complete and you can close the SQL Server Management studio.

MobileAsset V7 Only:

After it has been restored, you will need to run `C:\Program Files (x86)\Wasp Technologies\MobileAsset\Database\WaspDBInstaller\Upgrade\FixAssetUser.sql` to correct the database user account. To run that script in SQL, go to `File > Open > File` and select `FixAssetUser.sql` in the browse window. Make sure the selected database is `WaspTrackAsset` on the drop down menu (or the other named database you are restoring if this is a multi-company Enterprise installation) and click `Execute`.

If you have other client machines for the Pro or Enterprise versions, either rerun the

installation and enter the new server name when prompted, or edit the registry and in HKEY_LOCAL_MACHINE\SOFTWARE\Wow6432Node\Wasp Technologies\MobileAsset\Options, modify License Server to the new server machine name, and Server to the new name\WASPDBEXPRESS, or the appropriate server\instance name for Enterprise.

MobileAsset V6 Only:

After it has been restored, you will need to run the batch file <http://dl.waspbarcode.com/wasp/supportfiles/CreateWaspAccountsMA6.zip> to correct the database user account.

These same instructions will also apply when moving your database to a new server machine. Create the backup on the old server using Database Manager, then copy it to C:\Program Files \Microsoft SQL Server\MSSQL.1\MSSQL\Backup (32bit) or C:\Program Files (x86)\Microsoft SQL Server\MSSQL.1\MSSQL\Backup (64bit) and follow the above instructions to restore it. You can download the batch file to correct the accounts separately from <http://dl.waspbarcode.com/wasp/supportfiles/CreateWaspAccountsMA6.zip> . Download and extract the file on the new server, then run Upgrade.bat.

If you have other client machines for the Pro or Enterprise versions, either rerun the installation and enter the new server name when prompted, or edit the registry and in HKEY_LOCAL_MACHINE\SOFTWARE\Wow6432Node\Wasp Technologies\MobileAsset\Options, modify License Server to the new server machine name, and Server to the new name\WASPDBEXPRESS, or the appropriate server\instance name for Enterprise.