



# WASP PROTECT

Portal > Knowledgebase > FAQs > InventoryControl: How to Restore the Database from MDF and LDF Files

---

## InventoryControl: How to Restore the Database from MDF and LDF Files

Nathaniel Summers - 2020-05-13 - in FAQs

Issue: In most cases, one should use the Backup, Move, and Restore procedure found in the following:

<http://support.waspbarcode.com/kb/articles/741>

In instances where a backup cannot be made the following method may allow you to restore using the MDF and LDF data files.

### 1. Locate the Original MDF and LDF files

The location of your database files should be located in:

C:\Program Files (x86)\Microsoft SQL Server\MSSQL11.WASPD EXPRESS\MSSQL\DATA\

*The exact location may be different depending upon your version of SQL and/or operating system*

You're looking specifically for the following files:

**WaspTrackInventory.mdf**

**WaspTrackInventory\_log.ldf**

Copy these files to the new PC

### 2. Install InventoryControl on the New Machine

Fully install InventoryControl on the new machine

Be sure to select Database, Service, and Client tools during the installation

We should be able to open InventoryControl to see a blank slate when completed

### 3. Stop the Services

On the PC where the new database is to reside, open your services list:

Click Start > Run (or Windows Key + R) to open the **Run Dialog**

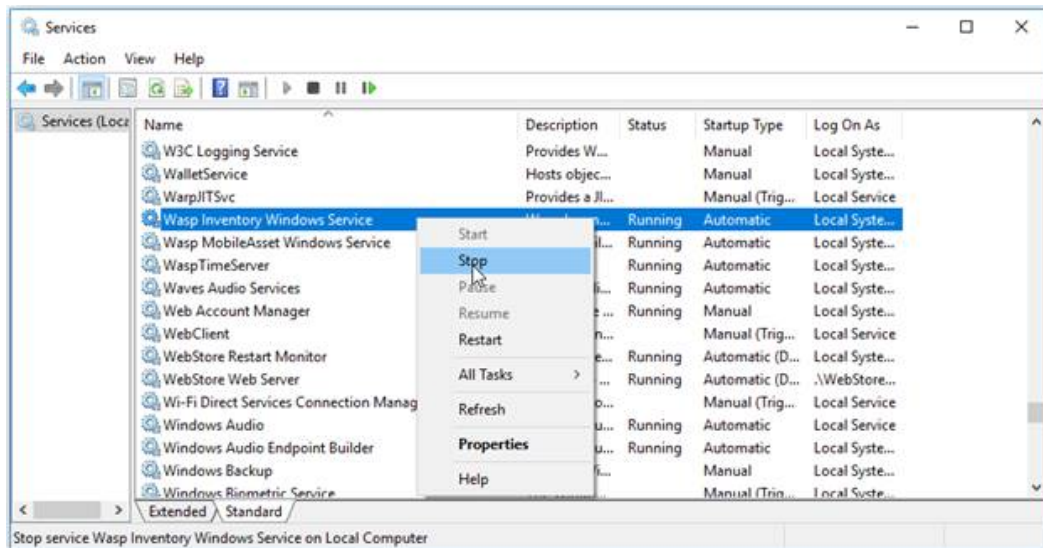
Type **Services.msc**

click **OK**

Find and stop the following services:

**Wasp Inventory Windows Service**

**SQL Server (WASPDBEXPRESS)**



### 4. Copy out the current MDF and LDF files

In the following location:

C:\Program Files (x86)\Microsoft SQL Server\MSSQL11.WASPDBEXPRESS\MSSQL\DATA\

Copy the following files to a different location

**WaspTrackInventory.mdf**

**WaspTrackInventory\_log.ldf**

(This is so we have something to go back to if the restore is not successful)

### 5. Copy the Original MDF and LDF files over the new files

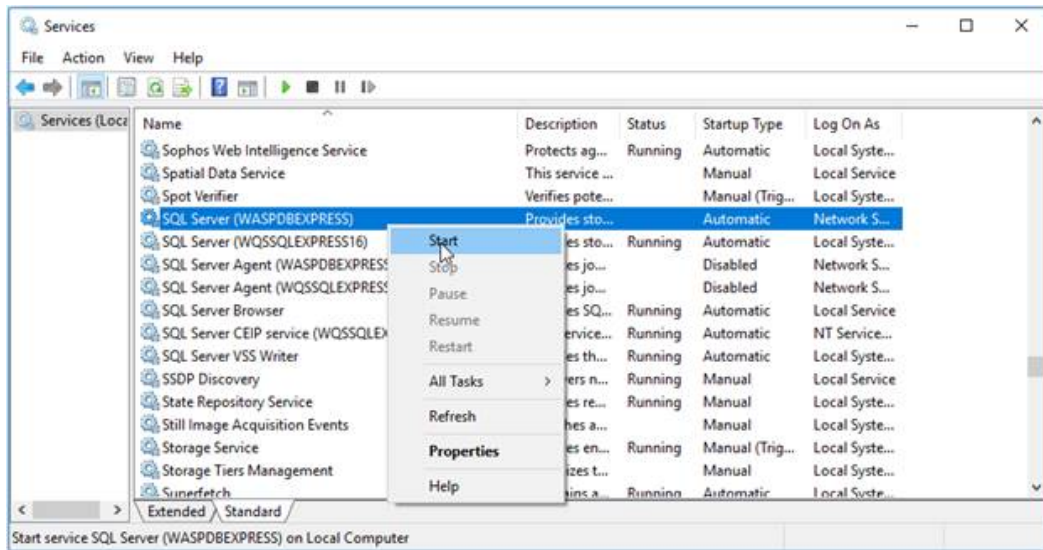
Take the original MDF and LDF files, and copy them to the location of the new files.

If prompted to replace the files, select **yes**

### 6. Start SQL Server (WASPDBEXPRESS) Service

The **SQL Server (WASPDBEXPRESS)** Service was previously stopped, start it again.

Do not start the other service yet.



## 7. Fix Restored Users

Log into SQL Server Management Studio using **SQL Authentication** and the following credentials

Username: **sa**

Password: **Wasp\$07Wasp\$07**

Click File menu > Open > File

Navigate to:

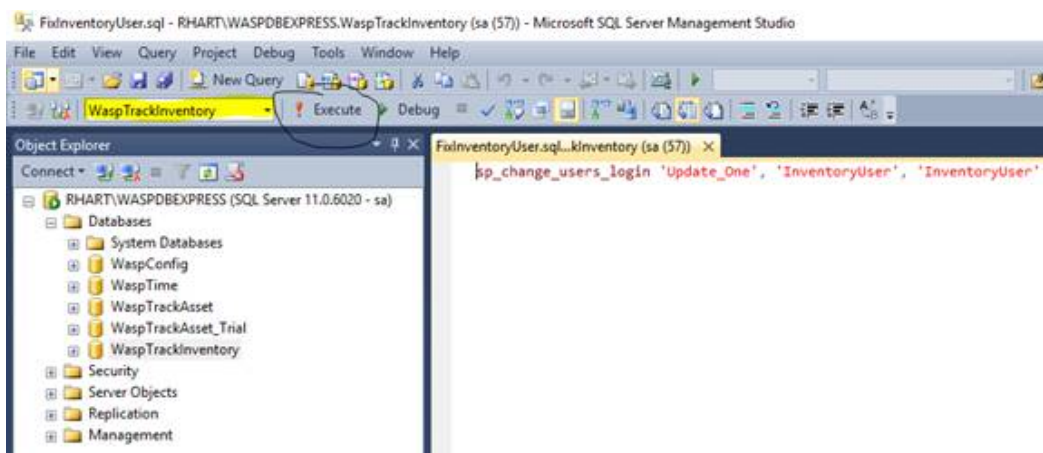
C:\Program Files (x86)\Wasp

Technologies\InventoryControl\Database\WaspDBInstaller\Upgrade\

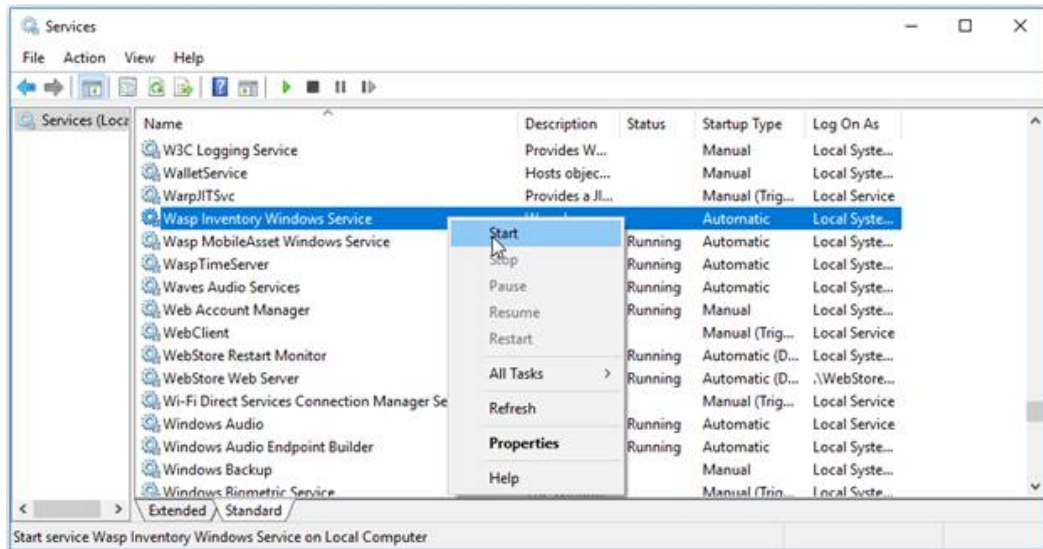
And open the file

**FixInventoryUser.sql**

With the WaspTrackInventory database selected in the dropdown, click **Execute**



## 8. Restart Wasp Inventory Windows Service



You should now be able to log into InventoryControl and see your old data.